

## Introduction

The coordination of assets and related information exchange forms a cornerstone for dispatching operations, enabling Elia to:

- plan maintenances of the grid,
- monitor the availability of production to satisfy demand,
- avoid and manage congestions on the grid,
- ensure the availability of ancillary services,

**with the aim of providing a secure grid and at the same time stimulating new opportunities, enabling consumers to play a central role.**

New regulation, a changing energy landscape and an evolution in operational needs call for a major evolution for the coordination of assets and congestion management.

This evolution is discussed and implemented by Elia, together with the stakeholders, in the iCAROS ('Integrated Coordination of Assets for Redispatching and Operational Security') project.

# High level indicative planning of the implementation of the iCAROS project

Apr-18

Publication of the reviewed and consulted design notes for the coordination of assets and congestion management.

Description of business and system requirements.

Implementation and testing (including IT system and operational processes) by Elia and Grid Users.  
Go-live preparation (including the set-up of the contractual framework).

2022

Go-live.



# Impact on Grid Users

The **Grid User** plays a key part in the appointment of the roles, the coordination between them, and in assuring compliance with regulation. For the purpose of coordination and congestion management, each Elia-connected Grid User is obliged to appoint an Outage Planning Agent and a Scheduling Agent.



## Roles & responsibilities PRESENT

GRID USER

**BALANCE RESPONSIBLE PARTY (BRP)**  
Responsible for outage planning and scheduling.

## Roles & responsibilities FUTURE

GRID USER

**OUTAGE PLANNING AGENT**

The Grid User is Outage Planning Agent or appoints another market party in line with the rules.

**The Outage Planning Agent** is responsible for the delivery of outage plans (e.g., outage due to maintenance).

GRID USER

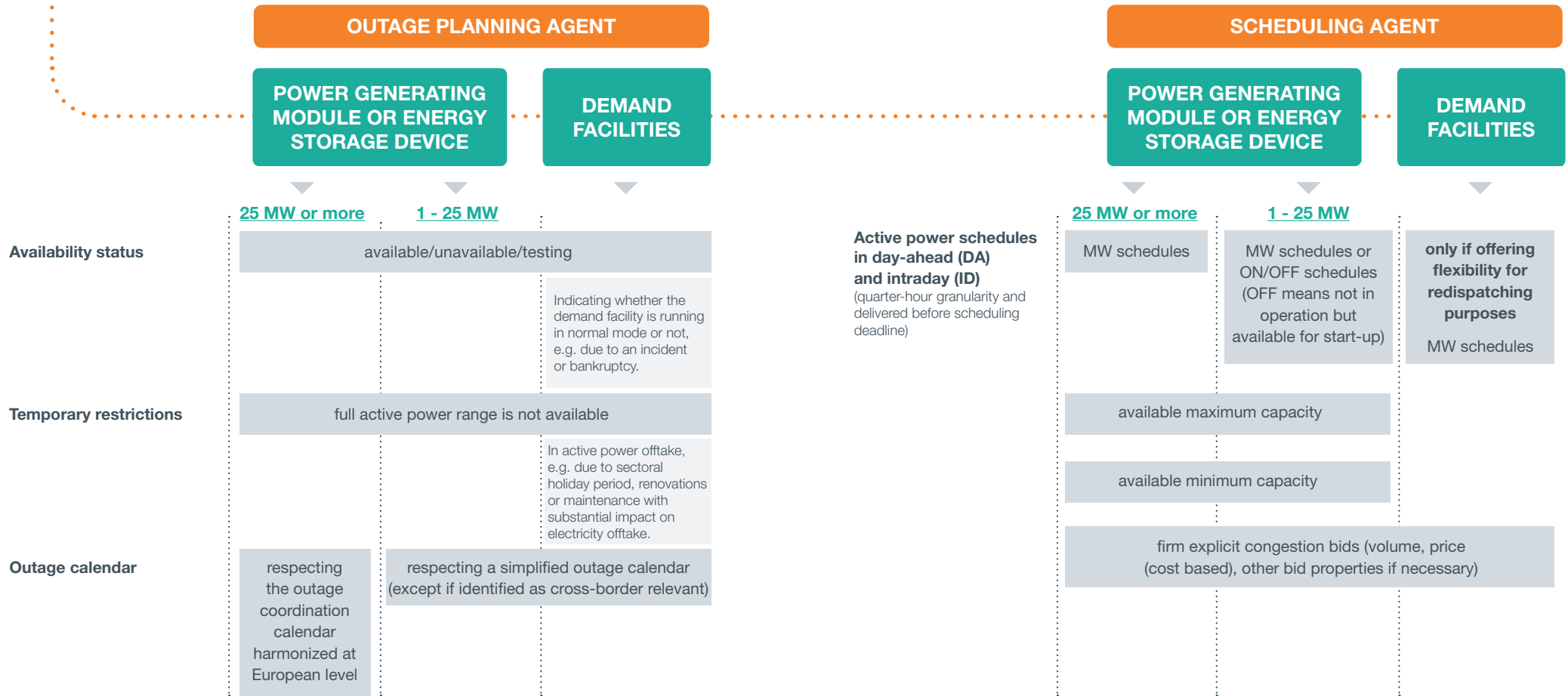
**SCHEDULING AGENT**  
(Incl. bidding for redispatching)

The Grid User is Scheduling Agent or appoints another market party in line with the rules.

**The Scheduling Agent** is responsible for the delivery of generation and/or consumption schedules at the level of the concerned asset one day in advance ("Day ahead") and update if necessary throughout the day ("Intraday"). Elia also assigns to the Scheduling Agent the responsibility to offer flexibility to deal with congestion risks.

The new approach

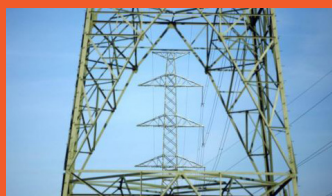
The following sections give a general description of the new requirements for different assets on the site of a Grid User connected to the TSO or to a TSO-connected CDS.



# Need more information?

Feel free to contact us via

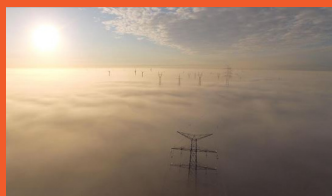
- your Contract Manager
- your Key Account Manager
- the Contracting Department (contracting\_as@elia.be)



**FUTURE ROLES AND RESPONSIBILITIES FOR THE DELIVERY OF ANCILLARY SERVICES**



**DESIGN NOTE FOR THE COORDINATION OF ASSETS:  
PART I - OUTAGE PLANNING**



**DESIGN NOTE FOR THE COORDINATION OF ASSETS:  
PART II - SCHEDULING AND REDISPATCHING**



**DESIGN NOTE FOR THE COORDINATION OF ASSETS:  
PART III - CONGESTION RISK INDICATOR**

## A new approach for coordination of assets and congestion management

