

# Technical Guide for Gateway Management

~~Version 2.3 – 12/6/2020~~ ~~Version 2.5-234-6 – 199702/12/2020~~

## Table of content

1	Contacts .....	53
2	Introduction .....	64
3	Asset configurations .....	75
4	Data exchange specifications .....	97
4.1	Data flows .....	97
4.2	Interfaces .....	108
4.2.1	Certificate base authentication .....	108
4.2.2	aFRR Messages .....	119
4.2.3	Encryption keys .....	1311
4.2.4	Encryption key Request .....	1513
4.2.5	Heartbeat .....	1614
4.3	Exception handling .....	1917
4.3.1	Buffering .....	1917
4.3.2	Throttling .....	1917
4.3.3	Message grouping .....	1917
4.3.4	Fallback files .....	2017
4.4	Service level agreements .....	2018
5	Technical features .....	2119
5.1	URL's and config .....	2119
5.2	Message format testing .....	2220
5.3	Time synchronization .....	2320
5.4	Examples .....	2421
5.4.1	Data exchange .....	2421
6	Master Data APIs .....	2623
6.1	Introduction .....	2623
6.2	GatewayModel Management .....	2724
6.2.1	GetGatewayModelList .....	2724
6.2.2	CreateGatewayModel .....	2724
6.2.3	UpdateGatewayModel .....	2825
6.2.4	ActivateGatewayModel .....	2926
6.2.5	DeactivateGatewayModel .....	2926
6.2.6	UpdateGatewayModelDocuments .....	3027
6.3	Gateway Management .....	3229

6.3.1	GetGatewayList.....	3229
6.3.2	CreateGateway .....	3330
6.3.3	EditGateway.....	3431
6.3.4	ActivateGateway.....	3431
6.3.5	DeactivateGateway.....	3532
6.3.6	RequestCertificateToken .....	3532
6.4	System Operator Management.....	3734
6.4.1	GetSystemOperatorList.....	3734
6.5	EndPoint Management.....	3835
6.5.1	GetEndpointList .....	3835
6.5.2	CreateEndpoint .....	3936
6.5.3	EditEndpoint .....	3936
6.5.4	ActivateEndpoint .....	4037
6.5.5	DeactivateEndpoint .....	4138
6.5.6	MoveEndpoint .....	4138
6.5.7	LinkEndpointToGateway.....	4239
6.5.8	DecoupleEndpointFromGateway.....	4340
6.5.9	ReplaceGateway .....	4441
6.6	Data Source / Statistics.....	4542
6.6.1	GetDashboardStatistics.....	4542
6.6.2	GetEndpointStatistics.....	4643
6.6.3	GetGatewayStatistics.....	4845
6.7	Business Rules.....	5047
6.7.1	All indicated time is in UTC.....	5047
1	Contacts.....	3
2	Introduction.....	4
3	Asset configurations.....	5
4	Data exchange specifications.....	7
4.1	Data flows.....	7
4.2	Interfaces.....	8
4.2.1	Certificate base authentication.....	8
4.2.2	aFRR Messages.....	9
4.2.3	Encryption keys.....	11
4.2.4	Encryption key Request.....	13
4.2.5	Heartbeat.....	14

4.3	Exception handling	17
4.3.1	Buffering	17
4.3.2	Throttling	17
4.3.3	Message grouping	17
4.3.4	Fallback files	17
4.4	Service level agreements	18
5	Technical features	19
5.1	URL's and config	19
5.2	Message format testing	20
5.3	Time synchronization	20
5.4	Examples	21
5.4.1	Data exchange	21
6	Master Data APIs	23
6.1	Introduction	23
6.2	GatewayModel Management	24
6.2.1	GetGatewayModelList	24
6.2.2	CreateGatewayModel	24
6.2.3	UpdateGatewayModel	25
6.2.4	ActivateGatewayModel	26
6.2.5	DeactivateGatewayModel	26
6.2.6	UpdateGatewayModelDocuments	27
6.3	Gateway Management	29
6.3.1	GetGatewayList	29
6.3.2	CreateGateway	30
6.3.3	EditGateway	31
6.3.4	ActivateGateway	31
6.3.5	DeactivateGateway	32
6.3.6	RequestCertificateToken	32
6.4	System Operator Management	34
6.4.1	GetSystemOperatorList	34
6.5	EndPoint Management	35
6.5.1	GetEndpointList	35
6.5.2	CreateEndpoint	36
6.5.3	EditEndpoint	36
6.5.4	ActivateEndpoint	37



## 1 Contacts

For any question, please contact the following persons:

- Business related questions:

Contract managers – [contracting\\_AS@elia.be](mailto:contracting_AS@elia.be)

- Technical questions:

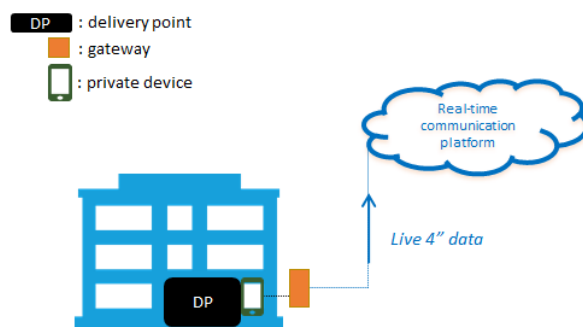
Frate Michaël – [michael.frate@elia.be](mailto:michael.frate@elia.be) – +32 472 38 10 32

Field Code Changed

## 2 Introduction

In the new aFRR design, a real-time data exchange of measured data and a collection of parameters, used for the aFRR-settlement process is required for delivery points  $DP_{PG}$  (i.e. delivery points for which ELIA does not receive MW daily schedules) participating to the aFRR service.

Private measurement devices must send the data, via gateways, directly to the Communication Platform. The gateways<sup>1</sup> have to be installed locally within the premise of the grid user and must have direct connection with the Communication Platform. To secure this data and the platform, we will deploy multiple mechanisms with respect to the data exchange (E2E encryption of the measured data between the gateway and the FlexHUB, certificate-based authentication) and require the upload on the Real-Time Communication Platform Web Portal of specific security-related technical documentation for each gateway model.



The following document describes technical framework related to the management of the gateways and delivery points connected to the Elia grid and their interaction with the Real-Time Communication Platform.

<sup>1</sup> More information regarding the gateways and related processes can be found in the explanatory note.

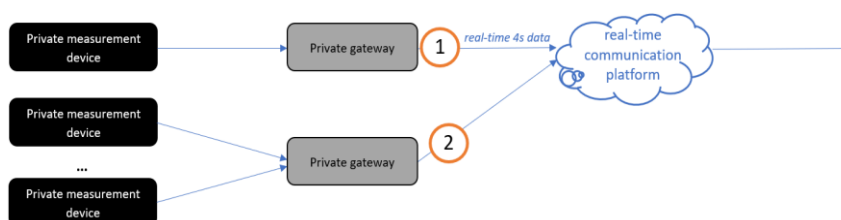
### 3 Asset configurations

The following configurations are authorised (see figure below):

1. A single gateway transmits real-time data from one SDP measured by a measurement device.
2. A single gateway transmits real-time data from multiple SDPs measured by measurement devices.

In both configurations,

- a. The private measurement device is located at the SDP. The SDP can also be defined at the level of the headpoint/access point.
- b. The connection of a single gateway to SDPs located on two or more access points is not allowed.
- c. A gateway must collect every 4s (exactly at second 0, 4, 8, 12, ...), the instantaneous power measurement values of a measurement device and other necessary parameters required for the aFRR services, and communicate this in real-time to the real-time Communication Platform using the communication protocol determined by Elia.
- d. The communication from gateway to Communication Platform is to be done without an intermediate third party communication system.
- e. The gateways always have to be installed locally within the premise of the grid user which is delimited by the headpoint/access point.



A local gateway being directly connected to the Real-Time Communication Platform (as described in point d & e above), is the final requirement. A transition period related to the final technical requirement is introduced for maximum one year starting on the go-live of the aFRR design foreseen on the 2<sup>nd</sup> of September 2020. The transition period is foreseen until the 1<sup>st</sup> of September 2021 at the latest.



This transition period implies that a temporary deviation of the final technical requirement above (i.e. point d & e above) is permitted (acceptance of a degraded mode). This temporary deviation permits the use of a connection via **centralized virtual gateways** to the Real-Time Communication Platform.

The data will still be sent per delivery point, each delivery point being linked to a separate virtual gateway, to the Communication Platform. All specifications written in this document and corresponding business processes remain valid and must be complied to. At the end of the transition period, all participants need to comply with the final requirements, whereby gateways must be installed locally and connected directly to Communication Platform.

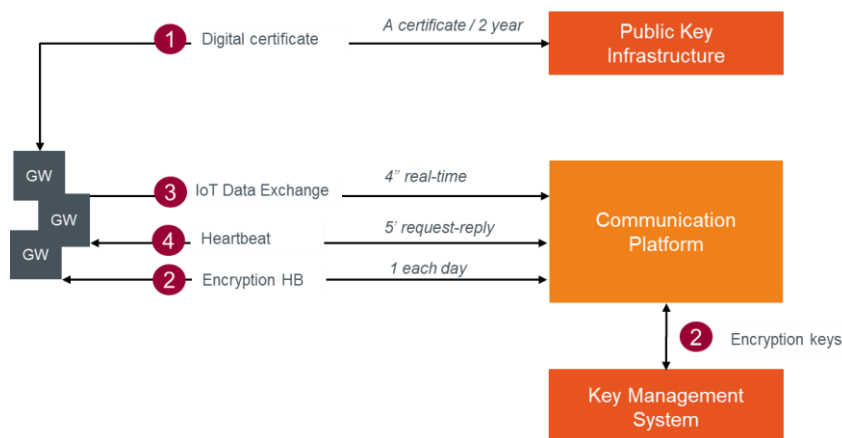
## 4 Data exchange specifications

This section describes the detailed data exchange interface specifications to exchange data between the gateways, the Communication Platform and the security components. In the first version of the platform, the exchange of aFRR data is unidirectional (except for Heartbeat) from the gateways via the aFRR Communication Platform to the Flexhub. The message flow will consist of real-time 4s aFRR messages, used for the settlement of aFRR activations. One message will be sent for each delivery point connected to a gateway.

The security mechanisms allow a reliable and secure data exchange: the Public Key Infrastructure allows certificate-based authentication of the gateways and the Key Management System distributes encryption keys that can be used to encrypt the aFRR message body.

### 4.1 Data flows

Underneath you can find a visualisation of the E2E process flow of all data exchanges the gateways must be able to support.



1. Each gateway and application that will connect to the Communication Platform will need to acquire a digital certificate from the Public Key Infrastructure (valid for 2 years). This certificate is used to authenticate the gateway for all connections to the platform and Key Management System.
2. As explained in the introduction, the data (body) has to be end-to-end encrypted (from GW to Flexhub). Every day, an independent Key Management System (KMS) will generate encryption keys they need to use for message body encryption and will send these via the Communication Platform to the gateways.

3. Every 4 seconds, an aFRR message with encrypted body is send by the gateway to the Communication Platform. To be able to connect and publish the message on the queue, the gateways must have a digital certificate retrieved from the Public Key Infrastructure (PKI).
4. At regular interval (initially every 5 minutes), the Communication Platform will put a heartbeat message on the topic on which the gateway must reply. The message includes key values for specific use cases and for gateway connection status updates.

Message queues enable asynchronous communication, which means that the endpoints that are producing and consuming messages interact with the queue, not each other. In contrast to queues, in which each message is processed by a single consumer, **topics** and subscriptions provide a one-to-many form of communication, in a publish/subscribe pattern

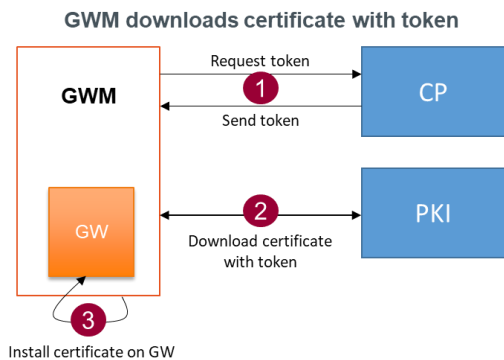
The data exchange between the gateway and the Communication Platform will be done using two different topics (1 topic for each direction [see section 5.1](#)).

## 4.2 Interfaces

### 4.2.1 Certificate base authentication

The following scenarios will be provided for acquisition of tokens and certificates:

#### Scenario 1: Acquisition of the Certificate through the portal



1. The CP user requests a token via an action in the user interface of the portal for a gateway. A validation code will be generated and shown in the portal in the concerned gateway information screen, and a mail will be sent to you with a token.
2. The CP user navigates to a secure webpage via the web portal and uses the token as well as the validation code to download the certificate.

- When the request is valid, the CP user can download a ZIP file with the PFX file and the password to extract the certificate (CERT file - X.509 Certificate). Another file is also present with an AES key. This key has to be used when the GW model is configured using AES to decrypt the received encryption key (see 4.2.3).

#### Scenario 2: Acquisition of the Certificate by the Gateway using a token

This second scenario will be available in a subsequent release. The detailed specification will follow in a next update of this document.

##### **4.2.1.1 Request**

Documentation will come.

##### **4.2.1.2 Reply**

Documentation will come.

##### **4.2.1.3 Technical information**

Information will come.

#### **4.2.2 aFRR Messages**

The messages in the data exchange will be composed of a functional header and a message body.

All required (and optional) fields are described in the following sections. In the element column, we use abbreviations to make the message tags smaller to reduce the message size.

With respect to datetimes, we use the ticks datetime format, which are the milliseconds, counted from the reference date: **01-01-2019 00:00:00 UTC**.

##### **4.2.2.1 Body (to be encrypted – see next sections)**

Element	Data Type	Origin	Description
SDP – SDP EAN	String	SCADA / FSP BE	The aFRR service delivery point EAN number.
DPM – DPmeasured	Decimal (JSON)	Metering device	The instantaneous net (gross if the net value cannot be measured) power measurement (in MW) per delivery point.

Formatted Table

DPB – DPbaseline	Decimal (JSON)	SCADA / FSP BE	The power (in MW) that the delivery point would have injected/consumed without the activation of aFRR service. The baseline is sent 60 seconds in advance.
AS – DPaFRR	Integer (JSON)	SCADA / FSP BE	This is a logical (0 or 1) signal that indicates whether the delivery point is delivering the service for the concerned timeframe.
PS – DPaFRR, supplied	Decimal (JSON)	SCADA / FSP BE	The number of MW of $\Delta P_{sec\_tot4}$ that is attributed by the BSP to the delivery point in question.
MTS – Measure timestamp	Ticks (UTC)	Metering device / gateway	The datetime on which the snapshot of the Pmeasured is taken. The Pbaseline in this message represents its value for this timestamp + 1 minute in the future. <u>As described in paragraph 3, this timestamp has to be an exact multiple of 4 seconds (without some ms delay).</u>

#### 4.2.2.2 Header

Element	Data Type	Origin	Description
MT - Message Type	String	Data source originated	Represents the message type & frequency. This makes sure that every message type is unique no matter what frequency is requested.
SID – Sender Id	String	Data source originated	The Endpoint Id as generated by the Communication Platform
GID – Gateway Id	String	Date source originated	The Gateway Id of the gateway as generated by the Communication Platform.
EKV – Encrypted key version	<del>Integer</del> String (optional)	Data source originated	The version of the encryption key used (changes at certain periods). If not sent then the message body is to be considered: not encrypted.
HV – Header version	Integer	Data source originated	The header version allows communication on the same message type but with different versions in case the message header structure is updated. This way, senders have time to adapt and a receiver knows how to interpret the message.
BV – Body version	Integer	Data source originated	The body version allows communication on the same message type but with different versions in case the message body structure is updated. This way, senders have time

Formatted Table

			to adapt and a receiver knows how to interpret the message.
CTS - Creation timestamp	Ticks (UTC)	Date source originated	The timestamp when the message has been sent by the sender

#### 4.2.2.3 Protocol

MQTTS protocol has to be used between the GW and the Communication Platform.

#### 4.2.2.4 Encryption Algorithm

In order to encrypt the message bodies, the Advanced Encryption Standard (AES) / Rijndael algorithm (128 bits) using symmetric keys is used. A lot of implementation libraries are available in Python, JAVA, C#, ...

The algorithm is described in the ISO/IEC 18033-3 standard. A simple description of this algorithm can be found here:

[https://en.wikipedia.org/wiki/Advanced\\_Encryption\\_Standard](https://en.wikipedia.org/wiki/Advanced_Encryption_Standard)

This algorithm is used with, as default, the following parameters:

- Block size: 128 bits
- Key size: 128 bits
- Cypher: CBC
- Padding: PKCS7

### 4.2.3 Encryption keys

As described in the process flows, a Key Management System will generate encryption keys and put them available through to each separate GW through the Communication Platform.

Therefore, a specific message type will be exchanged.

#### 4.2.3.1 Header

Parameter	Value	Description
MT - Message Type	String (ENCRYPTION KEY)	Represents the message type & frequency. This makes sure that every message type is unique no matter what frequency is requested.

#### 4.2.3.2 Body

**4.2.3.2** Pay attention that the body is a collection of keys. At the moment, only one MessageType is supported (aFRR) and thus only one element will be present in this collection.

Parameter	Value	Description
MT – Message Type		The message type for which the key is requested
KEY	string	The encryption key itself. This key is encrypted from the secure KMS using the GW certificate.
KV - Key version	Stringinteger	The key version of the requested key
KT – Key Type	string	The algorithm supported for encryption
VF - Valid From (Start Validity)	Ticks	Validity start datetime of the encryption key
VT - Valid To (Stop Validity)	Ticks	Validity end datetime of the encryption key

Formatted: Font: Bold

Formatted: Normal

Formatted Table

#### Gateways

An encryption key is valid for **36 hours** and a new key will be retrieved daily. This means we will have an encryption key overlap of 12 hours within which period the new key must be received and used :



#### 4.2.3.3 Technical information

The Communication Platform will exchange this message type with the same principles as the aFRR messages but in the other direction. ~~A specific topic for this message exchange will be foreseen. Therefore a second topic is used (see later).~~

Please note that currently, only the AES / Rijndael algorithm is supported by the platform to encrypt the AFFR messages. Others can be added later on.

To guarantee the confidentiality on the key, the key present in the message will be encrypted also. The way is encrypt (and thus decrypt) the message and receive the key is configured on GW Model level. There are 2 possibilities: RSA or AES. We advise to use RSA.

Using RSA: the GW will need to use its own certificate private key to decrypt the key.

Using AES: t-he GW will need to use the AES key given with the certificate to decrypt the key. The parameters are the same than the one described in 4.2.2.4. with the GW

~~certificate public key. The GW will need to use its own certificate private key to decrypt the key and after use it to send messages.~~

#### Message example:

##### Body (this will always be encrypted):

```
["MT": "aFRR", "KV": "0jV0ly", "KEY": "sapS9WSlpkSqG/TLEUY5tQ==", "VF": "47735117728", "VT": "47864717728"]
```

##### Complete message:

```
{
  "MT": "ENCRYPTIONKEY",
  "Body":
    "hj7EFc+S5giTck41loj21ILGOT4aZkafhXzSbmt/gy4ANB4as1MZsnyAwixU76vm4AEzniUw2
    9+8gNLEg9Yq0LeR8Hc3zEqGXFapIqNv+6TrSQy+VvZG2NR4xaK1EvAUF8GeP6U9FMVz4eB8
    MWB94RW44n3QOYfCQz7CTEJXvbwbcI GHJN4wsfGPMMDZUeUiLAuhHvGG7KeLPefTI2
    DoHS4N8B2mol7IXFZcSD1vnCy4kcF3Jyd6KPEzKfhkFJc2FZaidIjSWuo/Z5HQB74hAmg2m/R
    EQnw7yXfaHjJ3E8ZzoFZhW+sR7TsBnZvDlnni74zuv0R7UFTg2eHmKHnA==" }
```

Formatted: Font: Calibri, 12 pt

Formatted: Font: (Default) Calibri, 12 pt, Font color: Auto, English (United States), Not Highlight

Formatted: Font: (Default) Calibri, 12 pt, Font color: Auto, English (United States), Not Highlight

Formatted: Font: 12 pt, English (United States)

Formatted: Indent: First line: 0,5 cm

## 4.2.4 Encryption key Request

As described in the process flows, a Key Management System will generate encryption keys and put them available through to each separate GW through the Communication Platform. When the GW has to be replaced or restarted with an empty configuration, the latest encryption key(s) has(ve) to be requested to be able to send new messages again. Therefore, a specific message type will be exchanged.

Note that you will receive one message (as described in section 4.2.3) for each message type and version managed by your gateway with an active aFRR service (normally only one because there is currently only one message type with only one version).

You will only receive a key when the EP managed by your Gateway has an active service. If it is not the case, you can ask for a dummy key. This key has exactly the same format as a normal key, but is recognized by the platform as a dummy key and your message is logged with a specific error code and not transferred to the Flexhub.

### 4.2.4.1 Header

Parameter	Value	Description
MT - Message Type	String (ENCRYPTION KEYREQUEST)	Represents the message type & frequency. This makes sure that every message type is unique no matter what frequency is requested.

Formatted Table



<u>GID – Gateway Id</u>	<u>String</u>	<u>The Gateway Id of the gateway as generated by the Communication Platform.</u>
<u>CTS - Creation timestamp</u>	<u>Ticks (UTC)</u>	<u>The timestamp when the message has been sent by the sender.</u>

#### 4.2.4.2 Body

Body is empty.

#### 4.2.4.3 Technical information

The Communication Platform will exchange this message type with the same principles as the aFRR messages but in the other direction. A specific topic for this message exchange will be foreseen.

Message example:

```
{
  "MT": "ENCRYPTIONKEYREQUEST", "GID": "ABCDE", "CTS": 46184713978
}
```

**Formatted:** English (United States)

#### 4.2.5 Heartbeat

The heartbeat mechanism allows to exchange key values between the gateways and the Communication Platform that are not related to the exchange of market data from endpoints.



**Formatted**

**Formatted:** No Spacing, Justified, Indent: Left: 0,5 cm, Line spacing: single

The Communication Platform indicates the pace of the heartbeat messages and will be initially set to every five minutes.

**Formatted:** Font:

**Formatted:** Line spacing: single

The heartbeat message has two functioning methods:

- Ad hoc: an action button in the management portal will be provided in order to initiate a one-time heartbeat message sent to the gateway ([see platform user manual](#)). If this message is successfully replied to by the gateway, its communication status will be set to 'Connected'. This allows the user to test the connection and authentication of a gateway.
- Recurrent: once a service is activated on this endpoint, the CP will initiate a heartbeat at the interval it chooses (5 minutes initially). Also here, the communication status of

the gateway will be updated in the portal in case a single heartbeat is not replied to. The time to live of the heartbeat message will equal the heartbeat frequency (5 minutes initially).

#### 4.2.5.1 CP to GW

##### Header

Parameter	Value	Description
MID - MessageId	Integer	A counter that can be reinitialized
MT - Message Type	String (HEARTBEAT)	Represents the message type & frequency. This makes sure that every message type is unique no matter which message heartbeat is posted.

Formatted Table

##### Body

Parameter	Value	Description
TS - Time Sync	1	Only present when a gateway must synchronize its internal clock with an NTP server
GWV - GW Version	1	Only present when a gateway must send its firmware and software version. This will be requested daily.

Formatted Table

TimeSync et GW version parameters are 2 keys that can be added as list of parameters in the message. Other parameter(s) can be added later on in body.

~~Message example without time synchronization and GW version needed:~~

Message example without time synchronization and GW version needed:

```
{
  "MID": 36,
  "MT": "HEARTBEAT",
},
```

Message example with time synchronization and without GW version needed:

```
{
  "MID": 36,
  "MT": "HEARTBEAT",
  "Body": "{ \"TS\":1 }",
},
```

Message example without time synchronization and with GW version needed:

```
{
  "MID": 36,
  "MT": "HEARTBEAT",
  "Body": "{ \"GWV\":1}"
},
```

Message example with time synchronization and GW version needed:

```
{
  "MID": 36,
  "MT": "HEARTBEAT",
  "Body": "{ \"TS\":1, \"GWV\":1}"
},
```

#### 4.2.5.2 GW to CP

##### Header

Parameter	Value	Description
MID - MessageId	Integer	The message ID of the Heartbeat request message.
MT - Message Type	String (HEARTBEAT)	Represents the message type & frequency. This makes sure that every message type is unique no matter what frequency is requested.
GID – Gateway Id	String	The serial number of the gateway as registered in the Communication Platform.
CTS - Creation timestamp	Ticks (UTC)	The timestamp when the message has been sent by the sender

Formatted Table

##### Body

Parameter	Value	Description
SV - Software version	String	The model software version on which the gateway is running. Only to be sent when the GW Version field in the request is sent.
FWV - Firmware version	String	The model firmware version on which the gateway is running. Only to be sent when the GW Version field in the request is sent.

Formatted Table

Message example without software and firmware version needed:

```
{
  "MID": 36,
  "MT": "HEARTBEAT ",
  "GID": "123-ABCD",
  "CTS": 29666589696
},
```

Message example with software and firmware version needed:

```
{
  "MID": 36,
  "MT": "HEARTBEAT ",
  "GID": "123-ABCD",
  "CTS": 29666589696,
  "Body": "{ \"SV\": \"1.2\", \"FWV\": \"1.74\" }"
},
```

#### 4.2.5.3 Technical information

The Heartbeat will be pushed regularly on the GW receiver topic. The response is sent to the same topic as the aFRR messages.

### 4.3 Exception handling

#### 4.3.1 Buffering

A local buffering of at least 5 days has to be done locally. This will be used when the communication between the GW and the aFRR Communication Platform is interrupted. The data has to be timestamped at the moment they are produced. Once the communication is back up, the messages not sent during the interruption have to be sent.

#### 4.3.2 Throttling

To avoid congestion, a maximum of **1** message can be sent per second per gateway.

#### 4.3.3 Message grouping

- Message grouping can be done for a period of **1** minute (15 data of 4''). Pay attention that it is only valid during exception handling (communication failure, ...)
- When grouping, the header is sent only once and the bodies of the specific time series will be grouped in one body.
- The body will be encrypted only once

#### **4.3.4 Fallback files**

In the event that Elia does not receive the data through real time communication for bigger gaps, the following is put in place:

- The FSP must, on the request of Elia, be able to provide a fallback file with time series containing the same parameters requested in the aFRR message.
- Elia can only request fallback files in a period covering maximum 90 days before the day of request.
- The delivery of the fallback file must be fulfilled within five working days.

#### **4.4 Service level agreements**

To assure correct, complete and real-time data exchange, there will be a monitoring foreseen on predefined KPIs.

## 5 Technical features

### 5.1 URL's and config

The platform will be available at the following URL's:

ACC: <https://rtcp-acc.synergrid.be/>

DEMO: <https://rtcp-pre.synergrid.be/>

PROD: <https://rtcp.synergrid.be/>

Please note that the first tests starting from May 18<sup>th</sup> have to be done with the Pre-Prod environment. The acceptance environment will be used when updates of the platform will be released. The production environment (to use for the pre-qualifications tests) ~~will be~~ released in ~~the coming weeks~~ and will be available after contractual agreement with your Key Account Manager.

To connect to the platform, 2 steps are needed:

1) Connect to the Device Provisioning System (DPS) to receive the URL of the MQTT broker. This URL can be changed in time due to load spread for example or during a DRP. Therefore, each time a new connection has to be established, a call to the DPS has to be made to receive the broker URL.

2) Connection to the MQTT broker thanks to the URL given by the DPS

Note that you can use the Microsoft Azure IOTHub SDK available on Azure platform. This SDK is available in different programming language. There is no obligation to use it. An example of Gateway programming without the use of the SDK can be provided on demand (in C#). Device Twins functionalities are not used.

#### DPS

- The Device Provisioning System URL is the following without using the Microsoft SDK:

<https://global.azure-devices-provisioning.net/{connectionScope}/registrations/{GatewayBusinessId}/register?api-version=2019-03-31>

- The GatewayBusinessId is generated by the platform when a new Gateway is created.

- The GW certificate has to be used to connect to the DPS

- Connection scope :

ACC: 0ne000F2E25

DEMO: 0ne000F7DB8

PROD: 0ne000FEA0A

**Info:** With the Microsoft SDK, the connection string is the following:

global.azure-devices-provisioning.net

Formatted: English (United States)

Formatted: English (United States)

Field Code Changed

Formatted: English (United States)

Formatted: English (United States)

Formatted: English (United States)

Formatted: English (United States)

Formatted: Numbered + Level: 1 + Numbering Style: 1, 2, 3, ... + Start at: 1 + Alignment: Left + Aligned at: 0,63 cm + Indent at: 1,27 cm

Formatted: Underline

Formatted: Bulleted + Level: 1 + Aligned at: 0,63 cm + Indent at: 1,27 cm

Formatted: Indent: Left: 1,25 cm

Formatted: Bulleted + Level: 1 + Aligned at: 0,63 cm + Indent at: 1,27 cm

Formatted: Indent: Left: 1,27 cm

Formatted: Indent: Left: 1,25 cm

Note that these URL's & configurations will not change in case of DRP.

#### MQTT broker

- The connection has to be made thanks to the URL received by the DPS. During testing phase, this URL will remain fix (cp-iothub-pre-we-01.azure-devices.net).
- Both root certificate et GW certificate are needed to connect to the MQTT broker
- TLS 1.0, 1.1 and 1.2 are still supported but both 1.0 and 1.1 are deprecated and will not be supported in the future

So, it is needed to create an MQTTClient with these settings:

Hostname: cp-iothub-pre-we-01.azure-devices.net

Port: 8883

Secure: True

CA cert: rootCertificate (AzureBaltimoreRoot.cer)

Client Cert: Gateway certificate

MqttSslProtocols: TLSv1\_2

Then we do a Connect on this client object with these settings:

ClientId: Gateway business Id

User name: cp-iothub-pre-we-01.azure-devices.net/{clientId}/?api-version=2018-06-30

Password: null

CleanSession: false

Keep alive: 10

- The name of the 2 topics are:

Cloud to Device: \$"devices/{GatewayBusinessId}/messages/devicebound/#"

Device to Cloud: \$"devices/{GatewayBusinessId}/messages/events/"

Heartbeat request and encryption keys comes on the same topic (Cloud to Device). The received message type is different.

Hearbeat response and AFFR messages needs to be sent to the same topic also (Device to Cloud).

## 5.2 Message format testing

~~We will foresee the possibility to~~You can test the validity of JSON messages in the communication portal interface. See the user manual of the platform for further explanations.

Formatted: Indent: First line: 1,25 cm

Formatted: Underline

Formatted: English (United States)

Formatted: Bulleted + Level: 1 + Aligned at: 0,63 cm + Indent at: 1,27 cm

Formatted: English (United States)

Formatted: Font: 12 pt, Font color: Auto

Formatted: English (United States)

Formatted: English (United States)

Formatted: Bulleted + Level: 1 + Aligned at: 0,63 cm + Indent at: 1,27 cm

Formatted: English (United States)

Formatted: Indent: Left: 1,27 cm, No bullets or numbering

Formatted: Bulleted + Level: 1 + Aligned at: 0,63 cm + Indent at: 1,27 cm

Formatted: Font:

Formatted: Font: 12 pt, Font color: Auto

Formatted: Font: 12 pt, Font color: Auto

Formatted: English (United States)

Formatted: Bulleted + Level: 1 + Aligned at: 0,63 cm + Indent at: 1,27 cm

Formatted: English (United States)

Formatted: English (United States)

Formatted: Justified

Formatted: English (United States)

Formatted: English (United States)

Formatted: English (United States)

Formatted: English (United States)

Formatted: English (United States)

Formatted: English (United States)

## 5.3 Time synchronization

Gateways have to be synchronized with an NTP server or an equivalent system at all times. The precision of the timestamp should be at least 20ms. In case of consistent time difference, the CPO will request, via a heartbeat message, to synchronise to an NTP server.



## 5.4 Examples

Here below, some examples of messages are given. It will also be possible to test your message format (JSON Validation) in our test platform.

To receive more detail how to connect to the platform and a detailed example (in C#) of the code to connect to our platform, please use the technical reference as defined in paragraph 1 of this document.

Other examples (in different programming languages) can be found here: <https://docs.microsoft.com/en-us/azure/iot-hub/iot-hub-devguide-sdks>.

The section to use is 'IoT Hub Device SDKs'.

### 5.4.1 Data exchange

Messages have to be sent with encrypted body. In this section, we will give you the overview of unencrypted and encrypted data to allow you to generate the correct JSON before encryption. As previously described, the body can contain multiple 4 seconds data to cover some exception flows. Both cases are detailed here under.

- aFRR data – Unencrypted JSON with one 4" data :

```
{
  "MT": "AFRR",
  "HV": 1,
  "BV": 1,
  "GID": "SN4589674",
  "CTS": 33496996088,
  "EKV": 1,
  "SID": "84V-UOU-40P",
  "Body":
  "[{"DPM":0.123,"DPB":0.987,"AS":1,"PS":0.0,"MTS":0,"SDP":"541122334455667788"}]"
```

- aFRR data – Encrypted JSON with one 4" data :

The encryption key to use for this message has the following properties:

Encryption type: RijndaelManaged -> KeySize: 128, Padding: PKCS7, Mode: CBC

Encryption key: 9xu0DqrgaFYgrPhudq9s6A==

Encryption IV: 9xu0DqrgaFYgrPhudq9s6A==

```
{
```

```
"MT": "AFRR",
"HV": 1,
"BV": 1,
"GID": "SN4589674",
"CTS": 33496996088,
"EKV": 1,
"SID": "84V-UOU-40P",
"Body":
"9pMzn4mX5b/+y5SSPVzi6vgebzyLDQJ5bog4c3mg+8clXS1eVw5ELNIbBUqllhYznMt872Nu7dwUyBTb
Ykl7IPcC9NK8XFy9wnFtVLLmFjM="
}
```

## 6 Master Data APIs

### 6.1 Introduction

[This section describes the Communication Platform API's for master data management. These APIs enable the onboarding of your master data as well as querying information.](#)

[In order to be able to connect to the API's, you will need to contact the RTCP Operator \(thanks to the Contact us form or specific CPO email address\) to receive the needed credentials.](#)

[Authentication will be done based on a client secret mechanism linked to your RTCP account.](#)

Formatted: Heading 1

Formatted: Heading 2;A.1 RTE;Titre 2  
A.1;H2;H21;2;l2;h2;L2;Titre 21;t2.T2, No bullets or  
numbering

## 6.2 GatewayModel Management

### 6.2.1 GetGatewayModelList

Get: </api/interface/v1/GatewayModel>

#### 6.2.1.1 Domain

##### Request

No Parameter. The account is deduced from the authentication.

##### Response

Fields	Type	Description
<a href="#">id</a>	<a href="#">String</a>	<a href="#">The GW model id</a>
<a href="#">Name</a>	<a href="#">String</a>	<a href="#">The model name</a>
<a href="#">Status</a>	<a href="#">Enum</a>	<a href="#">Status (Active, Inactive)</a>
<a href="#">Manufacturer</a>	<a href="#">String</a>	<a href="#">The manufacturer name</a>
<a href="#">CreatedOn</a>	<a href="#">DateTime</a>	<a href="#">Creation date and time</a>

```
{
  "gatewayModels": [
    {
      "name": "string",
      "manufacturer": "string",
      "status": "None",
      "createdOn": "2020-08-19T12:59:46.617Z"
    }
  ],
  "errorCode": 0,
  "errorText": "string"
}
```

#### 6.2.1.2 Business Rules

No specific business rules

### 6.2.2 CreateGatewayModel

Put: </api/interface/v1/GatewayModel>

#### 6.2.2.1 Domain

##### Request

Fields	Type	Description
<a href="#">Name</a>	<a href="#">String</a>	<a href="#">The model name</a>
<a href="#">Manufacturer</a>	<a href="#">String</a>	<a href="#">The manufacturer name</a>
<a href="#">Encryption Key Type</a>	<a href="#">Enum</a>	<a href="#">Encryption Key Type (AES or RSA)</a>

**Formatted:** Heading 2;A.1 RTE;Titre 2  
A.1;H2;H2.1;2;l2;h2;L2;Titre 2.1;t2.T2, No bullets or numbering

**Formatted:** Heading 3;h3;A.1.1 RTE;l3;CT;H3;Titre 3.1;t3.T3;Section;t3t3;Leve, Space Before: 0 pt, After: 0 pt, No bullets or numbering, Tab stops: Not at 2,25 cm

**Formatted:** Heading 4, Space Before: 0 pt, After: 0 pt, No bullets or numbering, Tab stops: Not at 7,16 cm

**Formatted:** Font: Bold

**Formatted:** Font: Bold

**Formatted Table**

**Formatted:** Heading 4, Space Before: 0 pt, After: 0 pt, No bullets or numbering, Tab stops: Not at 7,16 cm

**Formatted:** Indent: Left: 0 cm

**Formatted:** Heading 3;h3;A.1.1 RTE;l3;CT;H3;Titre 3.1;t3.T3;Section;t3t3;Leve, Space Before: 0 pt, After: 0 pt, No bullets or numbering, Tab stops: Not at 2,25 cm

**Formatted:** Heading 4, Space Before: 0 pt, After: 0 pt, No bullets or numbering, Tab stops: Not at 7,16 cm

**Formatted:** Font: Bold

**Formatted Table**

```
{
  "name": "string",
  "manufacturer": "string",
  "encryptionKeyType": "None"
}
```

#### Response

Fields	Type	Description
<a href="#">gatewayModelId</a>	<a href="#">String</a>	<a href="#">The model id</a>
<a href="#">gatewayModelStatus</a>	<a href="#">Enum</a>	<a href="#">Status (Active, Inactive, DocumentationRequired)</a>

```
{
  "gatewayModelId": "3fa85f64-5717-4562-b3fc-2c963f66afa6",
  "gatewayModelStatus": "None",
  "errorCode": 0,
  "errorText": "string"
}
```

#### 6.2.2.2 Business Rules

Error Code	Error Text
<a href="#">0</a>	-
<a href="#">1</a>	<a href="#">GW Model Name must be unique</a>
<a href="#">2</a>	<a href="#">GW Model Name is empty</a>
<a href="#">3</a>	<a href="#">GW Model Manufacturer is empty</a>
<a href="#">4</a>	<a href="#">EncryptionKeyAlgorithm unknown</a>
<a href="#">100</a>	<a href="#">Unexpected error</a>

#### 6.2.3 UpdateGatewayModel

Post: </api/interface/v1/GatewayModel/{gatewayModelId}>

##### 6.2.3.1 Domain

#### Request

The function will edit the GW model.

Fields	Type	Description
<a href="#">Name</a>	<a href="#">String</a>	<a href="#">The model name</a>
<a href="#">Manufacturer</a>	<a href="#">String</a>	<a href="#">The manufacturer name</a>

```
{
  "name": "string",
  "manufacturer": "string"
}
```

Formatted: Justified, Indent: Left: 0 cm, First line: 0 cm

Formatted: Font: Bold

Formatted Table

Formatted: Normal

Formatted: Justified, Indent: Left: 0 cm

Formatted: Heading 4, Space Before: 0 pt, After: 0 pt, No bullets or numbering, Tab stops: Not at 7,16 cm

Formatted Table

Formatted: Heading 3;h3;A.1.1 RTE;l3;CT;H3;Titre 31;t3.T3;Section;ttt;Leve, Space Before: 0 pt, After: 0 pt, No bullets or numbering, Tab stops: Not at 2,25 cm

Formatted: Heading 4, Space Before: 0 pt, After: 0 pt, No bullets or numbering, Tab stops: Not at 7,16 cm

Formatted: Font: Bold

Formatted Table

#### Response

Fields	Type	Description
<a href="#">gatewayModelStatus</a>	Enum	Status (Active, Inactive, <a href="#">DocumentationRequired</a> )

```
{
  "gatewayModelStatus": "None",
  "errorCode": 0,
  "errorText": "string"
}
```

#### 6.2.3.2 Business Rules

ErrorCode	Error Text
<a href="#">0</a>	-
<a href="#">1</a>	<a href="#">GW Model not existsing for account</a>
<a href="#">2</a>	<a href="#">GW Model name is already existing or empty</a>
<a href="#">3</a>	<a href="#">GW Manufacturer name is empty</a>
<a href="#">4</a>	<a href="#">GW Model name already exists for account</a>
<a href="#">100</a>	<a href="#">Unexpected error</a>

#### 6.2.4 ActivateGatewayModel

Post: [/api/interface/v1/GatewayModel/{gatewayModelId}/activate](#)

##### 6.2.4.1 Domain

#### Request

No Parameter. The function will put the GW model to active.

#### Response

```
{
  "errorCode": 0,
  "errorText": "string"
}
```

#### 6.2.4.2 Business Rules

ErrorCode	Error Text
<a href="#">0</a>	-
<a href="#">1</a>	<a href="#">GW Model ID not existing for current account</a>
<a href="#">2</a>	<a href="#">GW Model status is already active</a>
<a href="#">100</a>	<a href="#">Unexpected error</a>

#### 6.2.5 DesactivateGatewayModel

Post: [/api/interface/v1/GatewayModel/{gatewayModelId}/deactivate](#)

Formatted: Font: Bold

Formatted Table

Formatted: Heading 4, Space Before: 0 pt, After: 0 pt, No bullets or numbering, Tab stops: Not at 7,16 cm

Formatted Table

Formatted: Heading 3;h3;A.1.1 RTE;l3;CT;H3;Titre 31;t3.T3;Section;ttt;Leve, Space Before: 0 pt, After: 0 pt, No bullets or numbering, Tab stops: Not at 2,25 cm

Formatted: Heading 4, Space Before: 0 pt, After: 0 pt, No bullets or numbering, Tab stops: Not at 7,16 cm

Formatted: Font: Bold

Formatted: Font: Bold

Formatted: Heading 4, Space Before: 0 pt, After: 0 pt, No bullets or numbering, Tab stops: Not at 7,16 cm

Formatted Table

Formatted: Heading 3;h3;A.1.1 RTE;l3;CT;H3;Titre 31;t3.T3;Section;ttt;Leve, Space Before: 0 pt, After: 0 pt, No bullets or numbering, Tab stops: Not at 2,25 cm

#### 6.2.5.1 Domain

##### Request

No Parameter. The function will put the GW model to inactive.

##### Response

```
{
  "errorCode": 0,
  "errorText": "string"
}
```

**Formatted:** Heading 4, Space Before: 0 pt, After: 0 pt, No bullets or numbering, Tab stops: Not at 7,16 cm

**Formatted:** Font: Bold

**Formatted:** Font: Bold

#### 6.2.5.2 Business Rules

ErrorCode	Error Text
<u>0</u>	-
<u>1</u>	<a href="#">GW Model ID not existing for current account</a>
<u>2</u>	<a href="#">GW Model status is already inactive</a>
<u>100</u>	<a href="#">Unexpected error</a>

**Formatted:** Heading 4, Space Before: 0 pt, After: 0 pt, No bullets or numbering, Tab stops: Not at 7,16 cm

**Formatted Table**

#### 6.2.6 UpdateGatewayModelDocuments

Post: </api/interface/v1/GatewayModel/{gatewayModelId}/documents>

##### 6.2.6.1 Domain

##### Request

```
secureProductDevelopmentLifecycleDocument
string($binary)

secureNetworkConfigurationManagementDocument
string($binary)

securityStandardsDocument
string($binary)

patchesAndUpdatesDocument
string($binary)

swAndHWTestsResultsDocument
string($binary)

publicDisclosedVulnerabilitiesDocument
string($binary)
```

**Formatted:** Heading 3;h3;A.1.1 RTE;l3;CT;H3;Titre 31;t3.T3;Section;ttt;Leve, Space Before: 0 pt, After: 0 pt, No bullets or numbering, Tab stops: Not at 2,25 cm

**Formatted:** Heading 4, Space Before: 0 pt, After: 0 pt, No bullets or numbering, Tab stops: Not at 7,16 cm

**Formatted:** Font: Bold

#### Response

```
{  
  "errorCode": 0,  
  "errorText": "string"  
}
```

#### 6.2.6.2 Business Rules

No specific business rules

**Formatted:** Font: Bold

**Formatted:** Heading 4, Space Before: 0 pt, After: 0 pt,  
No bullets or numbering, Tab stops: Not at 7,16 cm



## 6.3 Gateway Management

### 6.3.1 GetGatewayList

Get: </api/interface/v1/Gateway>

#### 6.3.1.1 Domain

##### Request

No Parameter. The account is deduced from the authentication.

##### Response

Fields	Type	Description
<a href="#">BusinessID</a>	<a href="#">String</a>	<a href="#">Gateway Business ID</a>
<a href="#">SerialNumber</a>	<a href="#">String</a>	<a href="#">Gateway SN</a>
<a href="#">Status</a>	<a href="#">Enum</a>	<a href="#">Status (Active, Inactive)</a>
<a href="#">CreatedOn</a>	<a href="#">DateTime</a>	<a href="#">Creation date and time</a>
<a href="#">LastHeartbeatDate</a>	<a href="#">DateTime</a>	<a href="#">Last Heartbeat Received date and time</a>
<a href="#">SWVersion</a>	<a href="#">String</a>	<a href="#">Software version</a>
<a href="#">FWVersion</a>	<a href="#">String</a>	<a href="#">Firmware version</a>
<a href="#">HeartbeatConnectionStatus</a>	<a href="#">Enum</a>	<a href="#">Connection Status (NotConnected, ConnectionFailed, Connected, ConnectionRequested)</a>
<a href="#">LinkedEndpoints</a>	<a href="#">Array of Endpoint</a>	
<a href="#">CertificateStatus</a>	<a href="#">Enum</a>	<a href="#">Certificate status enum (TokenRequested, TokenReceived, TokenRejected, CertificateReceived, CertificateRegistered, CertificatedRevoked)</a>
<a href="#">CertificateEndDate</a>	<a href="#">DateTime</a>	<a href="#">Certificate Validity until date and time</a>
<a href="#">GatewayModelID</a>	<a href="#">String</a>	<a href="#">The Gateway Model Id</a>
<a href="#">TimeSyncStatus</a>	<a href="#">Enum</a>	<a href="#">Time sync status (InsufficientResponse, UnacceptableLatency, TimeSyncSuccessful)</a>

##### Endpoint

Fields	Type	Description
<a href="#">HeadpointEAN</a>	<a href="#">String</a>	<a href="#">Headpoint EAN</a>
<a href="#">Name</a>	<a href="#">String</a>	<a href="#">Endpoint name</a>
<a href="#">BusinessID</a>	<a href="#">String</a>	<a href="#">Endpoint business ID</a>
<a href="#">LastCommunicationDate</a>	<a href="#">DateTime</a>	<a href="#">Last message received</a>

**Formatted:** Heading 2;A.1 RTE;Titre 2  
A.1;H2;H2.1;2;l2;h2;L2;Titre 2.1;t2.T2, No bullets or numbering

**Formatted:** Heading 3;h3;A.1.1 RTE;l3;CT;H3;Titre 3.1;t3.T3;Section;t3;Leve, Space Before: 0 pt, After: 0 pt, No bullets or numbering, Tab stops: Not at 2,25 cm

**Formatted:** Heading 4, Space Before: 0 pt, After: 0 pt, No bullets or numbering, Tab stops: Not at 7,16 cm

**Formatted:** Font: Bold

**Formatted:** Font: Bold

**Formatted Table**

**Formatted:** Font: Italic

**Formatted Table**

```
{
  "gateways": [
    {
      "createdOn": "2020-08-19T13:56:18.813Z",
      "businessId": "string",
      "serialNumber": "string",
      "status": "None",
      "timeSyncStatus": "None",
      "heartbeatConnectionStatus": "None",
      "lastHeartbeatDate": "2020-08-19T13:56:18.813Z",
      "firmwareVersion": "string",
      "softwareVersion": "string",
      "certificateEndDate": "2020-08-19T13:56:18.813Z",
      "certificateStatus": "None",
      "gatewayModelId": "3fa85f64-5717-4562-b3fc-2c963f66afa6",
      "linkedEndpoints": [
        {
          "headpointEAN": "string",
          "name": "string",
          "businessId": "string",
          "lastCommunicationDate": "2020-08-19T13:56:18.813Z"
        }
      ]
    }
  ],
  "errorCode": 0,
  "errorText": "string"
}
```

6.3.1.2 Business Rules

No specific business rules

6.3.2 CreateGateway

Put: /api/interface/v1/Gateway

6.3.2.1 Domain

Request

Fields	Type	Description
Serial Number	String	Gateway Serial Number
GatewayModelID	String	Gateway Model ID

```
{
  "serialNumber": "string",
  "gatewayModelId": "3fa85f64-5717-4562-b3fc-2c963f66afa6"
}
```

Response

Fields	Type	Description
GWBusinessID	String	GW Bus ID

```
{
  "gatewayBusinessId": "string",
  "errorCode": 0,
  "errorText": "string"
}
```

Formatted: Heading 4, Space Before: 0 pt, After: 0 pt, No bullets or numbering, Tab stops: Not at 7,16 cm

Formatted: Indent: Left: 0 cm

Formatted: Heading 3;h3;A.1.1 RTE;l3;CT;H3;Titre 31;t3.T3;Section;ttt;Leve, Space Before: 0 pt, After: 0 pt, No bullets or numbering, Tab stops: Not at 2,25 cm

Formatted: Heading 4, Space Before: 0 pt, After: 0 pt, No bullets or numbering, Tab stops: Not at 7,16 cm

Formatted: Font: Bold

Formatted Table

Formatted: Font: (Default) Verdana, 9 pt, Bold, Font color: Auto, English (United Kingdom)

Formatted: Text

Formatted Table

#### 6.3.2.2 Business Rules

ErrorCode	Error Text
<u>0</u>	-
<u>1</u>	<a href="#">GW Model ID unknow for this account</a>
<u>2</u>	<a href="#">Serial Number already existing for this account</a>
<u>100</u>	<a href="#">Unexpected error</a>

#### 6.3.3 EditGateway

Post: [/api/interface/v1/Gateway/{gatewayBusinessId}](#)

##### 6.3.3.1 Domain

###### Request

Fields	Type	Description
<a href="#">Serial Number</a>	<a href="#">String</a>	<a href="#">Gateway Serial Number</a>
<a href="#">GatewayModelID</a>	<a href="#">String</a>	<a href="#">Gateway Model ID</a>

```
{
  "gatewayModelId": "3fa85f64-5717-4562-b3fc-2c963f66afa6",
  "serialNumber": "string"
}
```

###### Response

```
{
  "errorCode": 0,
  "errorText": "string"
}
```

##### 6.3.3.2 Business Rules

ErrorCode	Error Text
<u>0</u>	-
<u>1</u>	<a href="#">GW Business ID not existing for current account</a>
<u>2</u>	<a href="#">GW Serial Number is already existing for another GW</a>
<u>3</u>	<a href="#">GW Model ID not existing for current account</a>
<u>100</u>	<a href="#">Unexpected error</a>

#### 6.3.4 ActivateGateway

Post: [/api/interface/v1/Gateway/{gatewayBusinessId}/activate](#)

**Formatted:** Heading 4, Space Before: 0 pt, After: 0 pt, No bullets or numbering, Tab stops: Not at 7,16 cm

**Formatted Table**

**Formatted:** Heading 3;h3;A.1.1 RTE;l3;CT;H3;Titre 31;t3.T3;Section;tt;Leve, Space Before: 0 pt, After: 0 pt, No bullets or numbering, Tab stops: Not at 2,25 cm

**Formatted:** Heading 4, Space Before: 0 pt, After: 0 pt, No bullets or numbering, Tab stops: Not at 7,16 cm

**Formatted:** Font: Bold

**Formatted Table**

**Formatted:** Font: Bold

**Formatted:** Heading 4, Space Before: 0 pt, After: 0 pt, No bullets or numbering, Tab stops: Not at 7,16 cm

**Formatted Table**

**Formatted:** Heading 3;h3;A.1.1 RTE;l3;CT;H3;Titre 31;t3.T3;Section;tt;Leve, Space Before: 0 pt, After: 0 pt, No bullets or numbering, Tab stops: Not at 2,25 cm

#### 6.3.4.1 Domain

##### Request

No Parameter. The function will put the Gateway status to active.

##### Response

```
{
  "errorCode": 0,
  "errorText": "string"
}
```

**Formatted:** Heading 4, Space Before: 0 pt, After: 0 pt, No bullets or numbering, Tab stops: Not at 7,16 cm

**Formatted:** Font: Bold

**Formatted:** Font: Bold

#### 6.3.4.2 Business Rules

ErrorCode	Error Text
<u>0</u>	-
<u>1</u>	<a href="#">GW Business ID not existing for current account</a>
<u>2</u>	<a href="#">GW status is already active</a>
<u>100</u>	<a href="#">Unexpected error</a>

**Formatted:** Heading 4, Space Before: 0 pt, After: 0 pt, No bullets or numbering, Tab stops: Not at 7,16 cm

**Formatted Table**

#### 6.3.5 DeactivateGateway

Post: [/api/interface/v1/Gateway/{gatewayBusinessId}/deactivate](#)

##### 6.3.5.1 Domain

##### Request

No Parameter. The function will put the GW status to inactive.

##### Response

```
{
  "errorCode": 0,
  "errorText": "string"
}
```

**Formatted:** Heading 3;h3;A.1.1 RTE;l3;CT;H3;Titre 31;t3.T3;Section;ttt;Leve, Space Before: 0 pt, After: 0 pt, No bullets or numbering, Tab stops: Not at 2,25 cm

**Formatted:** Heading 4, Space Before: 0 pt, After: 0 pt, No bullets or numbering, Tab stops: Not at 7,16 cm

**Formatted:** Font: Bold

**Formatted:** Font: Bold

##### 6.3.5.2 Business Rules

ErrorCode	Error Text
<u>0</u>	-
<u>1</u>	<a href="#">GW Business ID not existing for current account</a>
<u>2</u>	<a href="#">GW status is already inactive</a>
<u>3</u>	<a href="#">GW is currently linked to an EP</a>
<u>100</u>	<a href="#">Unexpected error</a>

**Formatted:** Heading 4, Space Before: 0 pt, After: 0 pt, No bullets or numbering, Tab stops: Not at 7,16 cm

**Formatted Table**

#### 6.3.6 RequestCertificateToken

Post: [/api/interface/v1/Gateway/{gatewayBusinessId}/certificate](#)

**Formatted:** Heading 3;h3;A.1.1 RTE;l3;CT;H3;Titre 31;t3.T3;Section;ttt;Leve, Space Before: 0 pt, After: 0 pt, No bullets or numbering, Tab stops: Not at 2,25 cm

#### 6.3.6.1 Domain

##### Request

Fields	Type	Description
<a href="#">GatewayBusinessId</a>	<a href="#">String</a>	<a href="#">Gateway Business Id</a>

##### Response

Fields	Type	Description
<a href="#">VerificationCode</a>	<a href="#">String</a>	<a href="#">The verification code</a>

#### 6.3.6.2 Business Rules

**Formatted:** Heading 4, Space Before: 0 pt, After: 0 pt, No bullets or numbering, Tab stops: Not at 7,16 cm

**Formatted:** Font: Bold

**Formatted Table**

**Formatted**

**Formatted:** Text

**Formatted:** Font: (Default) Verdana, 9 pt, Bold, Font color: Auto, English (United Kingdom)

**Formatted Table**

**Formatted:** Heading 4, Space Before: 0 pt, After: 0 pt, No bullets or numbering, Tab stops: Not at 7,16 cm

6.4 System Operator Management

6.4.1 GetSystemOperatorList

Get: /api/interface/v1/SystemOperator

6.4.1.1 Domain

Request

No Parameter.

Response

Fields	Type	Description
SystemOperators	Array of SystemOperator	List of System Operators
-	-	-
SystemOperator	-	-
Fields	Type	Description
ID	string	Id of the System Operator
Name	string	Name of System Operator
VATRegistrationNumber	DateTime	VAT of System Operator

```
{
  "systemOperators": [
    {
      "name": "string",
      "vatRegistrationNumber": "string"
    }
  ],
  "errorCode": 0,
  "errorText": "string"
}
```

6.4.1.2 Business Rules

No specific business rules

Formatted: Heading 2;A.1 RTE;Titre 2 A.1;H2;H21;2;l2;h2;L2;Titre 21;t2.T2, No bullets or numbering

Formatted: Heading 3;h3;A.1.1 RTE;l3;CT;H3;Titre 31;t3.T3;Section;ttt;Leve, Space Before: 0 pt, After: 0 pt, No bullets or numbering, Tab stops: Not at 2,25 cm

Formatted: Heading 4, Space Before: 0 pt, After: 0 pt, No bullets or numbering, Tab stops: Not at 7,16 cm

Formatted: Font: Bold

Formatted: Font: Bold

Formatted Table

Formatted: Font: 11 pt, Dutch (Belgium)

Formatted: Font: 11 pt

Formatted: Font: 11 pt, Dutch (Belgium)

Formatted: Justified

Formatted: Heading 4, Space Before: 0 pt, After: 0 pt, No bullets or numbering, Tab stops: Not at 7,16 cm

Formatted: Indent: Left: 0 cm

## 6.5 EndPoint Management

### 6.5.1 GetEndpointList

Get: /api/interface/v1/Endpoint

#### 6.5.1.1 Domain

##### Request

No Parameter. The account is deduced from the authentication.

##### Response

Fields	Type	Description
HeadpointEAN	String	Headpoint EAN
System operator	String	System operator name
Name	String	Endpoint name
BusinessID	String	Endpoint business ID
Status	enum	The endpoint status
LastCommunicationDate	DateTime	Last message received
Madate Start Date	DateTime	Mandate start date
Mandate End Date	DateTime	Mandate end date
Active service	Boolean	Is an active service present on EP

```
{
  "endpoints": [
    {
      "headpointEAN": "string",
      "systemOperator": "string",
      "name": "string",
      "businessId": "string",
      "status": "None",
      "lastCommunicationDate": "2020-08-19T15:36:57.602Z",
      "mandateStartDate": "2020-08-19T15:36:57.602Z",
      "mandateEndDate": "2020-08-19T15:36:57.602Z",
      "activeService": true
    }
  ],
  "errorCode": 0,
  "errorText": "string"
}
```

#### 6.5.1.2 Business Rules

No specific business rules

**Formatted:** Heading 2;A.1 RTE;Titre 2  
A.1;H2;H2.1;2;l2;h2;L2;Titre 2.1;t2.T2, No bullets or numbering

**Formatted:** Heading 3;h3;A.1.1 RTE;l3;CT;H3;Titre 3.1;t3.T3;Section;t3;Leve, Space Before: 0 pt, After: 0 pt, No bullets or numbering, Tab stops: Not at 2,25 cm

**Formatted:** Heading 4, Space Before: 0 pt, After: 0 pt, No bullets or numbering, Tab stops: Not at 7,16 cm

**Formatted:** Font: Bold

**Formatted:** Font: Bold

**Formatted Table**

**Formatted:** Heading 4, Space Before: 0 pt, After: 0 pt, No bullets or numbering, Tab stops: Not at 7,16 cm

**Formatted:** Indent: Left: 0 cm

## 6.5.2 CreateEndpoint

Post: /api/interface/v1/Endpoint/{headpointEAN}

### 6.5.2.1 Domain

#### Request

Fields	Type	Description
<a href="#">headpointEAN</a>	<a href="#">String</a>	<a href="#">HeadPoint EAN</a>
<a href="#">FriendlyName</a>	<a href="#">String</a>	<a href="#">EP Friendly Name</a>
<a href="#">SystemOperatorId</a>	<a href="#">String</a>	<a href="#">System Operator Id</a>
<a href="#">AccessHolder</a>	<a href="#">boolean</a>	<a href="#">Are you the contract access Holder (true/ false)</a>
<a href="#">CPDesignationDocument</a>	<a href="#">PDF (optional)</a>	<a href="#">CP Designation document</a>

#### Response

The response contains the endpoint business id and error code & text.

Fields	Type	Description
<a href="#">BusinessID</a>	<a href="#">String</a>	<a href="#">Endpoint business ID</a>

```
{
  "errorCode": 0,
  "errorText": "string"
}
```

### 6.5.2.2 Business Rules

ErrorCode	Error Text
<a href="#">0</a>	-
<a href="#">1</a>	<a href="#">EAN format invalid</a>
<a href="#">2</a>	<a href="#">EP Friendly name is already in use or empty</a>
<a href="#">3</a>	<a href="#">System operator is unknown</a>
<a href="#">4</a>	<a href="#">AccessHolder or CP Designation document needed</a>
<a href="#">5</a>	<a href="#">Document extension not allowed</a>
<a href="#">100</a>	<a href="#">Unexpected error</a>

## 6.5.3 EditEndpoint

Post: /api/interface/v1/Endpoint/{endpointBusinessId}

### 6.5.3.1 Domain

#### Request

Fields	Type	Description
<a href="#">endpointBusinessId</a>	<a href="#">String</a>	<a href="#">EP Business ID</a>
<a href="#">friendlyName</a>	<a href="#">String</a>	<a href="#">EP friendly name</a>

**Formatted:** Heading 3;h3;A.1.1 RTE;l3;CT;H3;Titre 31;t3.T3;Section;ttt;Leve, Space Before: 0 pt, After: 0 pt, No bullets or numbering, Tab stops: Not at 2,25 cm

**Formatted:** Heading 4, Space Before: 0 pt, After: 0 pt, No bullets or numbering, Tab stops: Not at 7,16 cm

**Formatted:** Font: Bold

**Formatted Table**

**Formatted:** Font: Bold

**Formatted Table**

**Formatted:** Indent: Left: 0 cm

**Formatted:** Heading 4, Space Before: 0 pt, After: 0 pt, No bullets or numbering, Tab stops: Not at 7,16 cm

**Formatted Table**

**Formatted:** Heading 3;h3;A.1.1 RTE;l3;CT;H3;Titre 31;t3.T3;Section;ttt;Leve, Space Before: 0 pt, After: 0 pt, No bullets or numbering, Tab stops: Not at 2,25 cm

**Formatted:** Heading 4, Space Before: 0 pt, After: 0 pt, No bullets or numbering, Tab stops: Not at 7,16 cm

**Formatted:** Font: Bold

**Formatted Table**



<a href="#">cpDesignationDocument</a>	<a href="#">String (optional)</a>	<a href="#">Communication Platform DesignationDocument</a>
---------------------------------------	-----------------------------------	--

#### Response

The response contains only error code and error text.

```
{
  "errorCode": 0,
  "errorText": "string"
}
```

#### 6.5.3.2 Business Rules

ErrorCode	Error Text
<a href="#">0</a>	-
<a href="#">1</a>	<a href="#">EP Business ID not existing for current account</a>
<a href="#">2</a>	<a href="#">EP status is inactive</a>
<a href="#">3</a>	<a href="#">No new information provided (FriendlyName and CPUser Doc empty)</a>
<a href="#">4</a>	<a href="#">Incorrect format of the CP User Doc</a>
<a href="#">5</a>	<a href="#">Friendly name is already in use for headpoint</a>
<a href="#">100</a>	<a href="#">Unexpected error</a>

#### 6.5.4 ActivateEndpoint

Post: [/api/interface/v1/Endpoint/{endpointBusinessId}/activate](#)

##### 6.5.4.1 Domain

#### Request

No Parameter. The function will put the Endpoint status to active.

#### Response

```
{
  "errorCode": 0,
  "errorText": "string"
}
```

#### 6.5.4.2 Business Rules

ErrorCode	Error Text
<a href="#">0</a>	-
<a href="#">1</a>	<a href="#">EP Business ID not existing for current account</a>
<a href="#">2</a>	<a href="#">EP status is already active</a>
<a href="#">100</a>	<a href="#">Unexpected error</a>

Formatted: Font: Bold

Formatted: Indent: Left: 0 cm

Formatted: Heading 4, Space Before: 0 pt, After: 0 pt, No bullets or numbering, Tab stops: Not at 7,16 cm

Formatted Table

Formatted: Heading 3;h3;A.1.1 RTE;l3;CT;H3;Titre 31;t3.T3;Section;ttt;Leve, Space Before: 0 pt, After: 0 pt, No bullets or numbering, Tab stops: Not at 2,25 cm

Formatted: Heading 4, Space Before: 0 pt, After: 0 pt, No bullets or numbering, Tab stops: Not at 7,16 cm

Formatted: Font: Bold, Not Italic

Formatted: Font: Not Italic

Formatted: Font: Bold, Not Italic

Formatted: Indent: Left: 0 cm

Formatted: Heading 4, Space Before: 0 pt, After: 0 pt, No bullets or numbering, Tab stops: Not at 7,16 cm

Formatted Table

## 6.5.5 DeactivateEndpoint

Post: /api/interface/v1/Endpoint/{endpointBusinessId}/deactivate

### 6.5.5.1 Domain

#### Request

No Parameter. The function will put the Endpoint status to inactive.

#### Response

```
{
  "errorCode": 0,
  "errorText": "string"
}
```

### 6.5.5.2 Business Rules

Error Code	Error Text
0	-
1	<a href="#">EP Business ID not existing for current account</a>
2	<a href="#">EP status is already inactive</a>
3	<a href="#">EP is currently linked to a GW</a>
4	<a href="#">EP is currently linked to a endpoint service</a>
100	<a href="#">Unexpected error</a>

## 6.5.6 MoveEndpoint

Post: /api/interface/v1/Endpoint/{endpointBusinessId}/move/{newHeadpointEAN}

### 6.5.6.1 Domain

#### Request

Fields	Type	Description
<a href="#">endpointBusinessId</a>	<a href="#">String</a>	<a href="#">EP Business ID</a>
<a href="#">newHeadpointEAN</a>	<a href="#">EAN</a>	<a href="#">New Headpoint EAN</a>
<a href="#">accessHolder</a>	<a href="#">Boolean</a>	<a href="#">Are you the contract access holder (true/false)</a>
<a href="#">systemOperatorId</a>	<a href="#">string</a>	<a href="#">The system operator id</a>
<a href="#">cpDesignationDocument</a>	<a href="#">String (optional)</a>	<a href="#">Communication Platform Designation Document</a>

**Formatted:** Heading 3;h3;A.1.1 RTE;l3;CT;H3;Titre 31;t3.T3;Section;ttt;Leve, Space Before: 0 pt, After: 0 pt, No bullets or numbering, Tab stops: Not at 2,25 cm

**Formatted:** Heading 4, Space Before: 0 pt, After: 0 pt, No bullets or numbering, Tab stops: Not at 7,16 cm

**Formatted:** Font: Bold

**Formatted:** Font: Bold

**Formatted:** Indent: Left: 0 cm

**Formatted:** Heading 4, Space Before: 0 pt, After: 0 pt, No bullets or numbering, Tab stops: Not at 7,16 cm

**Formatted Table**

**Formatted:** Heading 3;h3;A.1.1 RTE;l3;CT;H3;Titre 31;t3.T3;Section;ttt;Leve, Space Before: 0 pt, After: 0 pt, No bullets or numbering, Tab stops: Not at 2,25 cm

**Formatted:** Heading 4, Space Before: 0 pt, After: 0 pt, No bullets or numbering, Tab stops: Not at 7,16 cm

**Formatted:** Font: Bold

**Formatted Table**

endpointBusinessId \* required

string (path)

newHeadpointEAN \* required

string (path)

accessHolder

boolean (query)

systemOperatorId

string(\$uuid) (query)

Request body

cpDesignationDocument

string(\$binary)

Formatted: Justified

#### Response

```
{
  "errorCode": 0,
  "errorText": "string"
}
```

Formatted: Font: Bold

#### 6.5.6.2 Business Rules

Error Code	Error Text
<u>0</u>	-
<u>1</u>	<a href="#">EAN format invalid</a>
<u>2</u>	<a href="#">EP not existings for current account</a>
<u>3</u>	<a href="#">System operator is unknown</a>
<u>4</u>	<a href="#">AccessHolder or CP Designation document needed</a>
<u>100</u>	<a href="#">Unexpected error</a>

Formatted: Heading 4, Space Before: 0 pt, After: 0 pt, No bullets or numbering, Tab stops: Not at 7,16 cm

Formatted Table

#### 6.5.7 LinkEndpointToGateway

Post: /api/interface/v1/Endpoint/{endpointBusinessId}/link/{gatewayBusinessId}.

##### 6.5.7.1 Domain

#### Request

Fields	Type	Description
<a href="#">endpointBusinessId</a>	<a href="#">String</a>	<a href="#">EP Business ID</a>
<a href="#">gatewayBusinessId</a>	<a href="#">Date</a>	<a href="#">GW Business ID</a>

Formatted: Heading 3;h3;A.1.1 RTE;l3;CT;H3;Titre 31;t3.T3;Section;ttt;Leve, Space Before: 0 pt, After: 0 pt, No bullets or numbering, Tab stops: Not at 2,25 cm

Formatted: Heading 4, Space Before: 0 pt, After: 0 pt, No bullets or numbering, Tab stops: Not at 7,16 cm

Formatted: Font: Bold

Formatted Table

#### Response

Formatted: Font: Bold

```
{
  "errorCode": 0,
  "errorText": "string"
}
```

#### 6.5.7.2 Business Rules

ErrorCode	Error Text
<u>0</u>	-
<u>1</u>	<a href="#">GW Business ID not existing for current account</a>
<u>2</u>	<a href="#">GW status is inactive</a>
<u>3</u>	<a href="#">EP Business ID not existing for current account</a>
<u>4</u>	<a href="#">EP status is inactive</a>
<u>5</u>	<a href="#">EP is already coupled to another GW</a>
<u>6</u>	<a href="#">GW is already coupled to another EP in another HP</a>
<u>100</u>	<a href="#">Unexpected error</a>

### 6.5.8 DecoupleEndpointFromGateway

Post: [/api/interface/v1/Endpoint/{endpointBusinessId}/decouple/{endDate}](#)

#### 6.5.8.1 Domain

##### Request

Fields	Type	Description
<a href="#">endpointBusinessId</a>	<a href="#">String</a>	<a href="#">EP Business ID</a>
<a href="#">endDate</a>	<a href="#">Date</a>	<a href="#">Date of decoupling</a>

##### Response

```
{
  "errorCode": 0,
  "errorText": "string"
}
```

#### 6.5.8.2 Business Rules

ErrorCode	Error Text
<u>0</u>	-
<u>1</u>	<a href="#">EP Business ID not existing for current account</a>
<u>2</u>	<a href="#">EP is not coupled to any GW</a>
<u>3</u>	<a href="#">Date of decoupling has to be in the future</a>
<u>100</u>	<a href="#">Unexpected error</a>

**Formatted:** Heading 4, Space Before: 0 pt, After: 0 pt, No bullets or numbering, Tab stops: Not at 7,16 cm

**Formatted Table**

**Formatted:** Heading 3;h3;A.1.1 RTE;l3;CT;H3;Titre 31;t3.T3;Section;ttt;Leve, Space Before: 0 pt, After: 0 pt, No bullets or numbering, Tab stops: Not at 2,25 cm

**Formatted:** Heading 4, Space Before: 0 pt, After: 0 pt, No bullets or numbering, Tab stops: Not at 7,16 cm

**Formatted:** Font: Bold

**Formatted Table**

**Formatted:** Font: Bold

**Formatted:** Heading 4, Space Before: 0 pt, After: 0 pt, No bullets or numbering, Tab stops: Not at 7,16 cm

**Formatted Table**

## 6.5.9 ReplaceGateway

Post: `/api/interface/v1/Endpoint/{endpointBusinessId}/replace/{gatewayBusinessId}/{replacementDate}`

### 6.5.9.1 Domain

#### Request

Fields	Type	Description
<a href="#">endpointBusinessId</a>	<a href="#">String</a>	<a href="#">EP Business ID</a>
<a href="#">gatewayBusinessId</a>	<a href="#">String</a>	<a href="#">GW Business ID</a>
<a href="#">replacementDate</a>	<a href="#">Date</a>	<a href="#">Date of replacement</a>

#### Response

```
{
  "errorCode": 0,
  "errorText": "string"
}
```

### 6.5.9.2 Business Rules

ErrorCode	Error Text
<a href="#">0</a>	-
<a href="#">1</a>	<a href="#">EP Business ID not existing for current account</a>
<a href="#">2</a>	<a href="#">GW Business ID not existing for current account</a>
<a href="#">3</a>	<a href="#">EP is inactive</a>
<a href="#">4</a>	<a href="#">EP is not linked to any GW at the moment</a>
<a href="#">5</a>	<a href="#">GW is already linked to another HP</a>
<a href="#">100</a>	<a href="#">Unexpected error</a>

**Formatted:** Heading 3;h3;A.1.1 RTE;l3;CT;H3;Titre 31;t3.T3;Section;ttt;Leve, Space Before: 0 pt, After: 0 pt, No bullets or numbering, Tab stops: Not at 2,25 cm

**Formatted:** Heading 4, Space Before: 0 pt, After: 0 pt, No bullets or numbering, Tab stops: Not at 7,16 cm

**Formatted:** Font: Bold

**Formatted Table**

**Formatted:** Font: Bold

**Formatted:** Indent: Left: 0 cm

**Formatted:** Heading 4, Space Before: 0 pt, After: 0 pt, No bullets or numbering, Tab stops: Not at 7,16 cm

**Formatted Table**

6.6 Data Source / Statistics

6.6.1 GetDashboardStatistics

Get: /api/interface/v1/DataSource/active/metrics

6.6.1.1 Domain

Request

No Parameter.

Response

Fields	Type	Description
ActiveEndpointServiceConnectedNumber	int	Number of active data source with Active Service that are Connected
ActiveEndpointServiceConnectedPercentage	double	Percentage of active data source with Active Service that are Connected (value between 0 and 1)
ActiveEndpointServiceNotConnectedNumber	int	Number of active data source with Active Service that are Not Connected
ActiveEndpointServiceNotConnectedPercentage	double	Percentage of active data source with Active Service that are Not Connected (value between 0 and 1)
TotalActiveEndpointServiceNumber	int	Total number of active data source with active service
NotActiveEndpointServiceConnectedGatewayNumber	int	Number of active data source without Active Service that are Connected
NotActiveEndpointServiceConnectedGatewayPercentage	double	Percentage of active data source without Active Service that are Connected (value between 0 and 1)
NotActiveEndpointServiceNotConnectedGatewayNumber	int	Number of active data source without Active Service that are Not Connected

Formatted: Heading 2;A.1 RTE;Titre 2 A.1;H2;H21;2;l2;h2;L2;Titre 21;t2.T2, No bullets or numbering

Formatted: Heading 3;h3;A.1.1 RTE;l3;CT;H3;Titre 31;t3.T3;Section;ttt;Leve, Space Before: 0 pt, After: 0 pt, No bullets or numbering, Tab stops: Not at 2,25 cm

Formatted: Heading 4, Space Before: 0 pt, After: 0 pt, No bullets or numbering, Tab stops: Not at 7,16 cm

Formatted: Font: Bold, Not Italic

Formatted: Font: Not Italic

Formatted: Font: Bold, Not Italic

Formatted Table

<a href="#">NotActiveEndpointServiceNotConnectedGatewayPercentage</a>	<a href="#">double</a>	<a href="#">Percentage of active data source without Active Service that are Not Connected (value between 0 and 1)</a>
<a href="#">TotalNotActiveEndpointServiceNumber</a>	<a href="#">int</a>	<a href="#">Total number of active data source without active service</a>
<a href="#">TotalActiveEndpointNumber</a>	<a href="#">int</a>	<a href="#">Total number of active data source</a>

```
{
  "activeDataSourceMetrics": {
    "activeEndpointServiceConnectedGatewayNumber": 0,
    "activeEndpointServiceConnectedGatewayPercentage": 0,
    "activeEndpointServiceNotConnectedGatewayNumber": 0,
    "activeEndpointServiceNotConnectedGatewayPercentage": 0,
    "totalActiveEndpointServiceNumber": 0,
    "notActiveEndpointServiceConnectedGatewayNumber": 0,
    "notActiveEndpointServiceConnectedGatewayPercentage": 0,
    "notActiveEndpointServiceNotConnectedGatewayNumber": 0,
    "notActiveEndpointServiceNotConnectedGatewayPercentage": 0,
    "totalNotActiveEndpointServiceNumber": 0,
    "totalActiveEndpointNumber": 0
  },
  "errorCode": 0,
  "errorText": "string"
}
```

#### 6.6.1.2 Business Rules

No specific business rules

### 6.6.2 GetEndpointStatistics

Put: /api/interface/v1/Endpoint/Statistics

#### 6.6.2.1 Domain

##### Request

<a href="#">Fields</a>	<a href="#">Type</a>	<a href="#">Description</a>
<a href="#">periodStart</a>	<a href="#">DateTime</a>	<a href="#">Start of the statistic period</a>
<a href="#">periodEnd</a>	<a href="#">DateTime</a>	<a href="#">End of the statistic period</a>
<a href="#">endpointBusinessIds</a>	<a href="#">Array of string</a>	<a href="#">List of EP Business ID's</a>

**Formatted:** Heading 4, Space Before: 0 pt, After: 0 pt, No bullets or numbering, Tab stops: Not at 7,16 cm

**Formatted:** Indent: Left: 0 cm

**Formatted:** Heading 3;h3;A.1.1 RTE;l3;CT;H3;Titre 31;t3.T3;Section;ttt;Leve, Space Before: 0 pt, After: 0 pt, No bullets or numbering, Tab stops: Not at 2,25 cm

**Formatted:** Heading 4, Space Before: 0 pt, After: 0 pt, No bullets or numbering, Tab stops: Not at 7,16 cm

**Formatted:** Font: Bold

**Formatted Table**

```
{
  "periodStart": "2020-08-24T09:32:41.694Z",
  "periodEnd": "2020-08-24T09:32:41.694Z",
  "endpointBusinessIds": [
    "string"
  ]
}
```

### Response

Receive a collection of Gateway statistics.

Response:	-	-
Fields	Type	Description
periodStart	DateTime	Start of the statistic period
periodEnd	DateTime	End of the statistic period
endpointStatisticArray	EPStatistic	EP Statistics
-	-	-
EPStatistic	-	-
Fields	Type	Description
EP Business ID	string	EP Business ID
LastReceivedMessage	DateTime	Last Received Message
NrSuccessfulMessages	int	Messages with successful status
NrUnsuccessfulMessages	int	Messages with other status

```
{
  "periodStart": "2020-08-24T09:32:41.769Z",
  "periodEnd": "2020-08-24T09:32:41.769Z",
  "endpointStatistics": [
    {
      "endpointBusinessId": "string",
      "lastReceivedMessage": "2020-08-24T09:32:41.769Z",
      "nrSuccessfulMessages": 0,
      "nrUnsuccessfulMessages": 0,
      "errorCode": 0,
      "errorText": "string"
    }
  ],
  "errorCode": 0,
  "errorText": "string"
}
```

### 6.6.2.2 Business Rules

The EP array size is currently limited to 50

The maximum length of the statistic period is 24h located in the last 3 months.

Error Code	Error Text
<u>0</u>	-
<u>1</u>	EP Business ID not existing for current account

Formatted: Font: Bold

Formatted Table

Formatted: Heading 4, Space Before: 0 pt, After: 0 pt, No bullets or numbering, Tab stops: Not at 7,16 cm

Formatted Table



<u>2</u>	<u>EP Business ID not existing for current account for current interval</u>
<u>3</u>	<u>EP Business ID status is inactive</u>
<u>100</u>	<u>Unexpected error</u>

### 6.6.3 GetGatewayStatistics

Put: /api/interface/v1/Gateway/statistics

#### 6.6.3.1 Domain

##### Request

<u>Fields</u>	<u>Type</u>	<u>Description</u>
<u>GatewayBusinessIds</u>	<u>Array of string</u>	<u>List of GW Business ID's</u>

```
{
  "gatewayBusinessIds": [
    "string"
  ]
}
```

##### Response

Receive a collection of Gateway statistics.

<u>Response:</u>	-	-
<u>Fields</u>	<u>Type</u>	<u>Description</u>
<u>GWStatisticArray</u>	<u>GWStatistic</u>	<u>GW Statistics</u>
-	-	-
<u>GWStatistic</u>	-	-
<u>Fields</u>	<u>Type</u>	<u>Description</u>
<u>GW Business ID</u>	<u>string</u>	<u>GW Business ID</u>
<u>LastHeartbeatReceived</u>	<u>DateTime</u>	<u>Last Heartbeat Received</u>

```
{
  "gatewayStatistics": [
    {
      "gatewayBusinessId": "string",
      "lastHeartbeatReceived": "2020-08-19T15:16:39.482Z",
      "errorCode": 0,
      "errorText": "string"
    }
  ],
  "errorCode": 0,
  "errorText": "string"
}
```

**Formatted:** Heading 3;h3;A.1.1 RTE;l3;CT;H3;Titre 31;t3.T3;Section;ttt;Leve, Space Before: 0 pt, After: 0 pt, No bullets or numbering, Tab stops: Not at 2,25 cm

**Formatted:** Heading 4, Space Before: 0 pt, After: 0 pt, No bullets or numbering, Tab stops: Not at 7,16 cm

**Formatted:** Font: Bold

**Formatted Table**

**Formatted:** Font: Bold

**Formatted Table**

#### 6.6.3.2 Business Rules

The GW array size is currently limited to 50.

ErrorCode	Error Text
<u>0</u>	-
<u>1</u>	<u>GW Business ID not existing for current account</u>
<u>2</u>	<u>GW Business ID status is inactive</u>
<u>100</u>	<u>Unexpected error</u>

**Formatted:** Heading 4, Space Before: 0 pt, After: 0 pt, No bullets or numbering, Tab stops: Not at 7,16 cm

**Formatted Table**

## 6.7 Business Rules

The following business rules will be implemented according to the used method.

### 6.7.1 All indicated time is in UTC

All time is in UTC. Period start are included, period end is excluded.

**Formatted:** Heading 2;A.1 RTE;Titre 2  
A.1;H2;H21;2;l2;h2;L2;Titre 21;t2.T2, No bullets or  
numbering

**Formatted:** Indent: Left: 0 cm

**Formatted:** Heading 3;h3;A.1.1 RTE;l3;CT;H3;Titre  
31;t3.T3;Section;ttt;Leve, Space Before: 0 pt, After: 0 pt,  
No bullets or numbering, Tab stops: Not at 2,25 cm

**Formatted:** Indent: Left: 0 cm