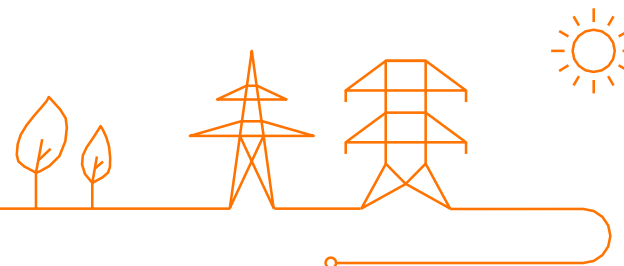


Implementation workshop: Prequalification User Interface illustrations

5th of May | Joren Wuyts

Agenda

1. Introduction
2. Registration & login
3. Creating and submitting a Standard CMU
4. Creating and submitting a Virtual CMU
5. Creating and submitting a Fast Track CMU
6. Reports & Account Details

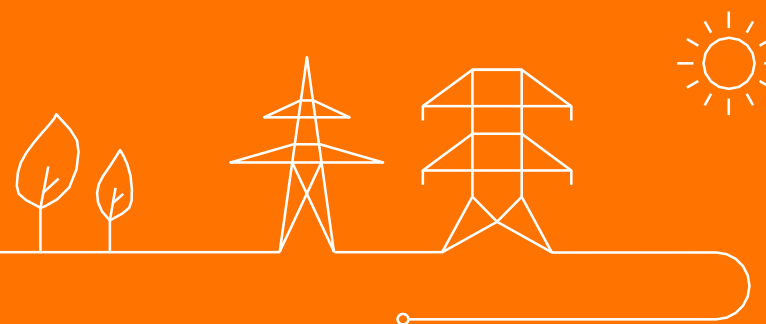


Introduction

- The **Prequalification Platform** is a tool to support the CRM Prequalification processes
- The following slides show illustrations of the **User Interface** for the Capacity Holder/(Prequalified)CRM Candidate
- Use cases:
 - Registration & login
 - Creating and submitting a Standard CMU
 - Creating and submitting a Virtual CMU
 - Creating and submitting a Fast Track CMU
 - Reports & Account Details
- Important remark: The following UI mock-ups are for illustrative purposes only. These are not exhaustive and still subject to change.



Registration & login



CRM Platform Registration

This page is for company registrations only. If you want to register as a natural person, please contact "XX" (email address).

Company Information

Company Name*

Applicable law*

Address Head Office

Street*

House Number*

ZIP*

City*

Country*

Telephone

Fax

Registration number (VAT)*

Business number*

Date of foundation

Energy Identification Code (EIC)*

Bank account details for payment and invoices

Bank account details for payment and invoices

Company name	<input type="text"/>
Email address	<input type="text"/>
Bank name*	<input type="text"/>
Street	<input type="text"/>
Postal code	<input type="text"/>
City	<input type="text"/>
Country	<input type="text"/>
IBAN*	<input type="text"/>
SWIFT/BIC*	<input type="text"/>
Currency for ordering & invoicing*	<input type="text"/>

Contact details

Language*	<input type="text"/>
Civil status	<input type="text"/>
First name*	<input type="text"/>
Last name*	<input type="text"/>
Function*	<input type="text"/>
Telephone	<input type="text"/>
Mobile*	<input type="text"/>
Email*	<input type="text"/>

*Fields with an asterix are mandatory



Platform for the Capacity Remuneration Mechanism

Log in

ID

Password


Log in

Forgot password

Compliance checks

Capacity contract framework [\(Open\)](#)


I agree with the capacity contract framework and its associated conditions and I agree to accept the terms and conditions of the capacity contract framework.

 Download

☐ I agree

Eligibility criteria [\(Open\)](#)


I agree with the eligibility criteria and its associated conditions and I agree to accept the terms and conditions of the eligibility criteria.

 Download

☐ I agree

Production license requirements [\(Open\)](#)


I agree with the production license requirements and its associated conditions and I agree to accept the terms and conditions of the production license requirements.

 Download

☐ I agree

Maximal CO² emission thresholds [\(Open\)](#)


I agree with the maximal CO² emission thresholds and its associated conditions and I agree to accept the terms and conditions of the maximal CO² emission thresholds.

 Download

☐ I agree

Legal and regulatory framework [\(Open\)](#)

I agree with the legal and regulatory framework and its associated conditions and I agree to accept the terms and conditions of the legal and regulatory framework.

 Download

☐ I agree

[Continue](#)

ENG

Prequalification Platform

Add new CMU

Add new fast-track CMU

Prequalification

Auction Demo

Auction

Reports

My Account

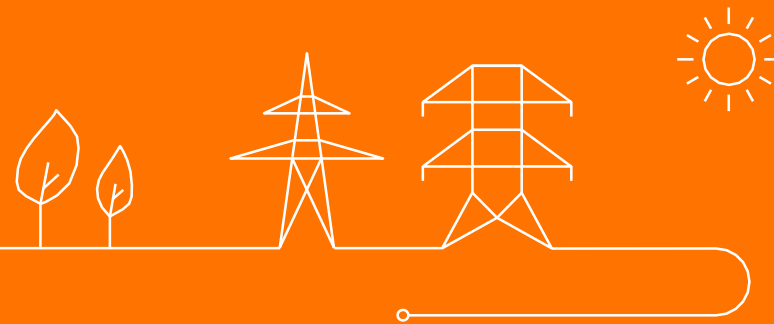
Logout

CMU Overview

CMU information

CMU ID ▲	Status ▲	Preq. date ▲
ID1	Approved	
ID2	Submitted	
ID3	Rejected	
ID4	Approved	
ID5	Saved	
ID6	Approved	
ID7	Prequalified	dd/mm/yy

Creating and submitting a standard CMU



ENG

Prequalification Platform

Add new CMU

Add new fast-track CMU

Prequalification

Auction Demo

Auction

Reports

My Account

Logout

CMU Overview

CMU information

CMU ID ▲	Status ▲	Preq. date ▲
ID1	Approved	
ID2	Submitted	
ID3	Rejected	
ID4	Approved	
ID5	Saved	
ID6	Approved	
ID7	Prequalified	dd/mm/yy

Prequalification

Auction Demo

Auction

Reports

My Account

Logout

CMU Overview

CMU information

CMU ID ▲	Status ▲
ID1	Approved
ID2	Submitted
ID3	Rejected
ID4	Approved
ID5	Saved
ID6	Approved
ID7	Prequalified

Which prequalification process do you want to start?

- ☒ Standard Prequalification Process (existing CMU or additional CMU)
- ☐ Specific Prequalification Process (Virtual CMU)

Confirm

Cancel

Prequalification

Auction Demo

Auction

Reports

My Account

Logout

CMU Overview

CMU ID ▲	Status ▲	Preq. date ▲
ID1	Approved	
ID2	Submitted	
ID3	Rejected	
ID4	Approved	
ID5	Saved	
ID6	Approved	
ID7	Prequalified	dd/mm/yy
ID8	Saved	

CMU information

CMU ID
Status
Creation date

ID8
Saved
dd/mm/yyyy

+ Add DP

ENG

Prequalification

Auction Demo

Auction

Reports

My Account

Logout

Add Delivery Point

Delivery Point

EAN Access point

123456789123456789

EAN Delivery point

123456789123456789

Save

Cancel

No EAN available

Add Delivery Point

Delivery Point

EAN Access point 123456789123456789

EAN Delivery point 123456789123456789

Delivery Point Data

Grid Type connection Distribution grid

Single line diagram

Technology Gas Turbine

Other DP's on the same geographical area

Technical dependency with other Delivery Points

Opt-out volume repartition

CDS - CRM candidate Agreement

Data specific for existing Delivery points

Expected nominal reference power

CO2 emission

CO2 emission attestation

Methodology for NRP calculation Method 1: Historical measurement data

Reference of related balancing result for NRP method 2 mFRR Prequalification test

Prequalification test date for NRP method 3 / /

Baseline adjustment

Unshedable margin

Nameplate capacity of generation

Net injection or net offtake Net injection

Full technical injection capacity

Full technical offtake capacity

Grid user declaration

Renouncement of operating aid

Save

Cancel

Logout

Add Delivery Point

Delivery Point

EAN Access point

123456789123456789

EAN Delivery point

123456789123456789

Delivery Point Data

Grid Type connection

Distribution grid

Single line diagram



Technology

Gas Turbine

Other DP's on the same geographical area

Technical dependency with other Delivery Points

Opt-out volume repartition

CDS - CRM candidate Agreement



Data specific for additional delivery points

Declared nominal reference power

Existing connection volume

Production permit delivered by FOD or a proof of submission



Save

Cancel

Logout

Prequalification

Auction Demo

Auction

Reports

My Account

Logout

CMU Overview

CMU ID ▲	Status ▲	Preq. date ▲
ID1	Approved	
ID2	Submitted	
ID3	Rejected	
ID4	Approved	
ID5	Saved	
ID6	Approved	
ID7	Prequalified	dd/mm/yy
ID8	Saved	

CMU information

CMU ID
Status
Creation date

ID8
Saved
dd/mm/yyyy

- + DP1
- + DP2
- + DP3

Edit CMU details

Submit CMU

Edit DP



Edit DP



Edit DP



+ Add DP

ENG

Prequalification

Auction Demo

Auction

Reports

My Account

Logout

Edit CMU details

CMU details

Conditional bank guarantee



Financial institution of bank guarantee

SLA

Derating factor

Project ID

Create new project ID

Project execution plan



Expected start date of the project



ID of technical agreement

Fluxys Signed conditional offer



Opt-out notification



CMU data to be provided before transaction period

Declared day-ahead price

NEMO

Save

Cancel

Prequalification

Auction Demo

Auction

Reports

My Account

Logout

CMU Overview

CMU ID ▲	Status ▲	Preq. date ▲
ID1	Approved	
ID2	Submitted	
ID3	Rejected	
ID4	Approved	
ID5	Saved	
ID6	Approved	
ID7	Prequalified	dd/mm/yy
ID8	Saved	

CMU information

CMU ID
Status
Creation date

ID8
Saved
dd/mm/yyyy

Conditional bank guarantee <...>
Financial institution <...>
SLA <...>
Derating factor <...>
Project ID <...>
Project execution plan <...>
Project start date - end date <...>
ID of technical agreement <...>
Opt-out notification <...>
Declared day-ahead price <...>
NEMO <...>

Edit CMU details

Submit CMU

+ DP1

+ DP2

+ DP3

Edit DP



Edit DP



Edit DP



+ Add DP

Prequalification

Auction Demo

Auction

Reports

My Account

Logout

CMU Overview

CMU ID ▲	Status ▲	Preq. date ▲
ID1	Approved	
ID2	Submitted	
ID3	Rejected	
ID4	Approved	
ID5	Saved	
ID6	Approved	
ID7	Prequalified	dd/mm/yy
ID8	Submitted	

CMU information

CMU ID	ID8
Status	Submitted
Creation date	dd/mm/yyyy
Conditional bank guarantee	<...>
Financial institution	<...>
SLA	<...>
Derating factor	<...>
Project ID	<...>
Project execution plan	<...>
Project start date - end date	<...>
ID of technical agreement	<...>
Opt-out notification	<...>
Declared day-ahead price	<...>
NEMO	<...>

+ DP1

+ DP2

+ DP3

Prequalification

Auction Demo

Auction

Reports

My Account

Logout

CMU Overview

CMU ID ▲	Status ▲	Preq. date ▲
ID1	Approved	
ID2	Submitted	
ID3	Rejected	
ID4	Approved	
ID5	Saved	
ID6	Approved	
ID7	Prequalified	dd/mm/yy
ID8	Rejected	

CMU information

CMU ID
Status
Creation date
dd/mm/yyyy

Conditional bank guarantee <...>
Financial institution <...>
SLA <...>
Derating factor <...>
Project ID <...>
Project execution plan <...>
Project start date - end date <...>
ID of technical agreement <...>
Opt-out notification <...>
Declared day-ahead price <...>
NEMO <...>

Edit CMU details

Resubmit CMU

+ DP1

+ DP2

+ DP3

Edit DP



Edit DP



Edit DP



Prequalification

Auction Demo

Auction

Reports

My Account

Logout

CMU Overview

CMU ID ▲	Status ▲	Preq. date ▲
ID1	Approved	
ID2	Submitted	
ID3	Rejected	
ID4	Approved	
ID5	Saved	
ID6	Approved	
ID7	Prequalified	dd/mm/yy
ID8	Rejected	

CMU information

Financial institution <...>
SLA <...>
Derating factor <...>
Project ID <...>
Project execution plan <...>
Project start date - end date <...>
ID of technical agreement <...>
Declared day-ahead price <...>
NEMO <...>



DP1

Edit DP



Grid type connection TSO connected
EAN Access point 123456789123456789
EAN Delivery point 123456789123456789
Single line diagram <...>

Reason for rejection: The single line diagram is incomplete.

Technology <...>
CREG investment file number <...>
Other DP's on the same geographical area <...>
Technical dependencies with other DP's <...>
DSO/CDS - CRM candidate Agreement <...>
Expected nominal reference power <...>
CO2 emission <...>
CO2 emission attribution <...>

Prequalification

Auction Demo

Auction

Reports

My Account

Logout

CMU Overview

CMU ID ▲	Status ▲	Preq. date ▲
ID1	Approved	
ID2	Submitted	
ID3	Rejected	
ID4	Approved	
ID5	Saved	
ID6	Approved	
ID7	Prequalified	dd/mm/yy
ID8	Approved	

CMU information

CMU ID
Status
Creation date

ID8
Approved
dd/mm/yyyy

Conditional bank guarantee <...>
Financial institution <...>
SLA <...>
Derating factor <...>
Project ID <...>
Project execution plan <...>
Project start date - end date <...>
ID of technical agreement <...>
Opt-out notification <...>
Declared day-ahead price <...>
NEMO <...>

- + DP1
- + DP2
- + DP3

Submit opt-out AND/OR contestation

Edit Opt-out

Contest NRP

Contest NRP

Contest NRP

Prequalification

Auction Demo

Auction

Reports

My Account

Logout

CMU Overview

CMU ID ▲	Status ▲
ID1	Approved
ID2	Submitted
ID3	Rejected
ID4	Approved
ID5	Saved
ID6	Approved
ID7	Prequalified
ID8	Approved

Contestation of Nominal Reference Power

NRP target (MW)

Date of nominal reference power test



DP2



DP3

opt-out AND/OR contestation

Edit Opt-out

Contest NRP

Contest NRP

Contest NRP

Prequalification

Auction Demo

Auction

Reports

My Account

Logout

CMU Overview

CMU ID ▲	Status ▲
ID1	Approved
ID2	Submitted
ID3	Rejected
ID4	Approved
ID5	Saved
ID6	Approved
ID7	Prequalified
ID8	Approved

CMU information

Edit opt-out volume of CMU

Opt-out notification



+ DP1

+ DP2

+ DP3

t opt-out AND/OR contestation

Edit Opt-out

Contest NRP

Contest NRP

Contest NRP

Prequalification

Auction Demo

Auction

Reports

My Account

Logout

CMU Overview

CMU ID ▲	Status ▲	Preq. date ▲
ID1	Approved	
ID2	Submitted	
ID3	Rejected	
ID4	Approved	
ID5	Saved	
ID6	Approved	
ID7	Prequalified	dd/mm/yy
ID8	Prequalified	dd/mm/yy

CMU information

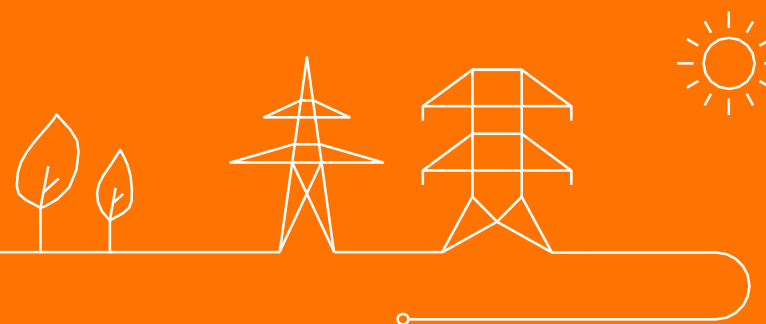
CMU ID	ID8
Status	Prequalified
Creation date	dd/mm/yyyy
Prequalification date	dd/mm/yyyy
Conditional bank guarantee	<...>
Financial institution	<...>
SLA	<...>
Derating factor	<...>
Project ID	<...>
Project execution plan	<...>
Project start date - end date	<...>
ID of technical agreement	<...>
Declared day-ahead price	<...>

+ DP1

+ DP2

+ DP3

Creating and submitting a Virtual CMU



ENG

Prequalification Platform

Add new CMU

Add new fast-track CMU

Prequalification

Auction Demo

Auction

Reports

My Account

Logout

CMU Overview

CMU information

CMU ID ▲	Status ▲	Preq. date ▲
ID1	Approved	
ID2	Submitted	
ID3	Rejected	
ID4	Approved	
ID5	Saved	
ID6	Approved	
ID7	Prequalified	dd/mm/yy

Prequalification

Auction Demo

Auction

Reports

My Account

Logout

CMU Overview

CMU information

CMU ID ▲	Status ▲
ID1	Approved
ID2	Submitted
ID3	Rejected
ID4	Approved
ID5	Saved
ID6	Approved
ID7	Prequalified

Which prequalification process do you want to start?

☒ Standard Prequalification Process (existing CMU or additional CMU)

☐ Specific Prequalification Process (Virtual CMU)

Confirm Cancel

ENG

Prequalification

Auction Demo

Auction

Reports

My Account

Logout

Add Virtual Capacity Market Unit

Declared Eligible Volume (MW)

Conditional bank guarantee



Financial institution of bank guarantee

Bank name



Project execution plan



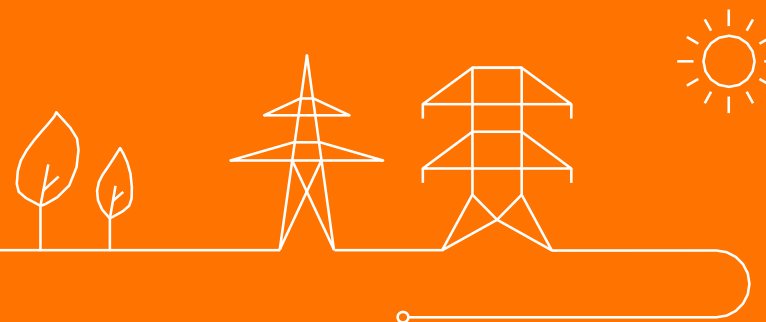
Expected start date of the project



Save

Cancel

Creating and submitting a fast track CMU



ENG

Prequalification Platform

Add new CMU

Add new fast-track CMU

Prequalification

Auction Demo

Auction

Reports

My Account

Logout

CMU Overview

CMU information

CMU ID ▲	Status ▲	Preq. date ▲
ID1	Approved	
ID2	Submitted	
ID3	Rejected	
ID4	Approved	
ID5	Saved	
ID6	Approved	
ID7	Prequalified	dd/mm/yy

Prequalification

Auction Demo

Auction

Reports

My Account

Logout

Prequalification Fast-track Submission

EAN Delivery point

EAN Access point

(if different from DP)

Grid Type connection

Distribution grid



Declared Nominal Reference power (MW)

Derating factor

Opt-out notification



Grid user declaration

Grid user declaration.pdf



Save

Cancel

Prequalification

Auction Demo

Auction

Reports

My Account

Logout

CMU Overview

CMU ID ▲	Status ▲	Preq. date ▲
ID1	Approved	
ID2	Submitted	
ID3	Rejected	
ID4	Approved	
ID5	Saved	
ID6	Approved	
ID7	Prequalified	dd/mm/yy
ID8	Prequalified	dd/mm/yy
FT1	Saved	

CMU information

CMU ID
Status
Creation date
Submission date

FT1
Saved
dd/mm/yy
dd/mm/yy

Grid type connection
EAN DP
EAN AP
Declared nominal reference power
Derating factor
Opt-out notification
Grid user declaration

DSO connected
123456789123456789
123456789123456789
<...>
<...>
<...>
<...>

Edit fast-track details

Submit fast-track

Prequalification

Auction Demo

Auction

Reports

My Account

Logout

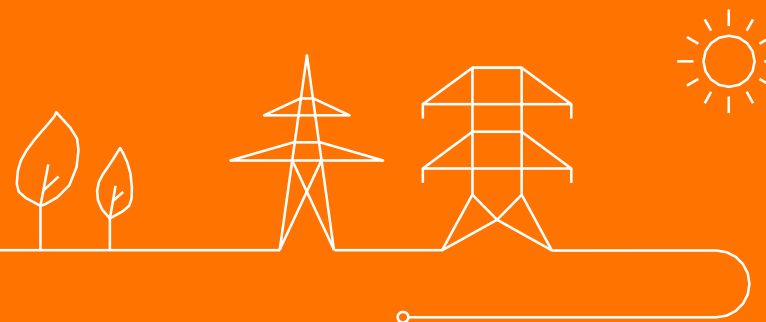
CMU Overview

CMU ID ▲	Status ▲	Preq. date ▲
ID1	Approved	
ID2	Submitted	
ID3	Rejected	
ID4	Approved	
ID5	Saved	
ID6	Approved	
ID7	Prequalified	dd/mm/yy
ID8	Prequalified	dd/mm/yy
FT1	Accepted	dd/mm/yy


CMU information

CMU ID	FT1
Status	Accepted
Creation date	dd/mm/yy
Prequalification date	dd/mm/yy
Grid type connection	DSO connected
EAN DP	123456789123456789
EAN AP	123456789123456789
Declared nominal reference power	<...>
Derating factor	<...>
Opt-out notification	<...>
Grid user declaration	<...>

Reports & Account Details





 ENG ▼

Prequalification

Auction Demo

Auction

Reports

My Account

Logout

Reports

Delivery period ▼

Auction ▼

☐ Excel ☐ PDF

Prequalification

Auction Demo

Auction

Reports

My Account

Logout

Company Information

Change Account Data

Cancel

Company name:

Applicable law:

Address Head Office:

Telephone:

Fax:

Registration Number:

Date of Foundation:

Energy IDentification Code (EIC):

Company name and bank account details for payment and invoices

Company name:

Email address:

Bank name:

Street:

Postal code:

City:

Country:

IBAN:

SWIFT/BIC:

Currency for ordering & invoicing:

Contact details

Language:

Civil status:

First name:

Last name:

Function:

Telephone:

Mobile:

Email:

Thank you.

