

# Implementation TF CRM Prequalification & Opt Out processes

Implementation Task Force CRM 05/05/2020



## 1<sup>st</sup> CRM implementation TF – 05/05/2020

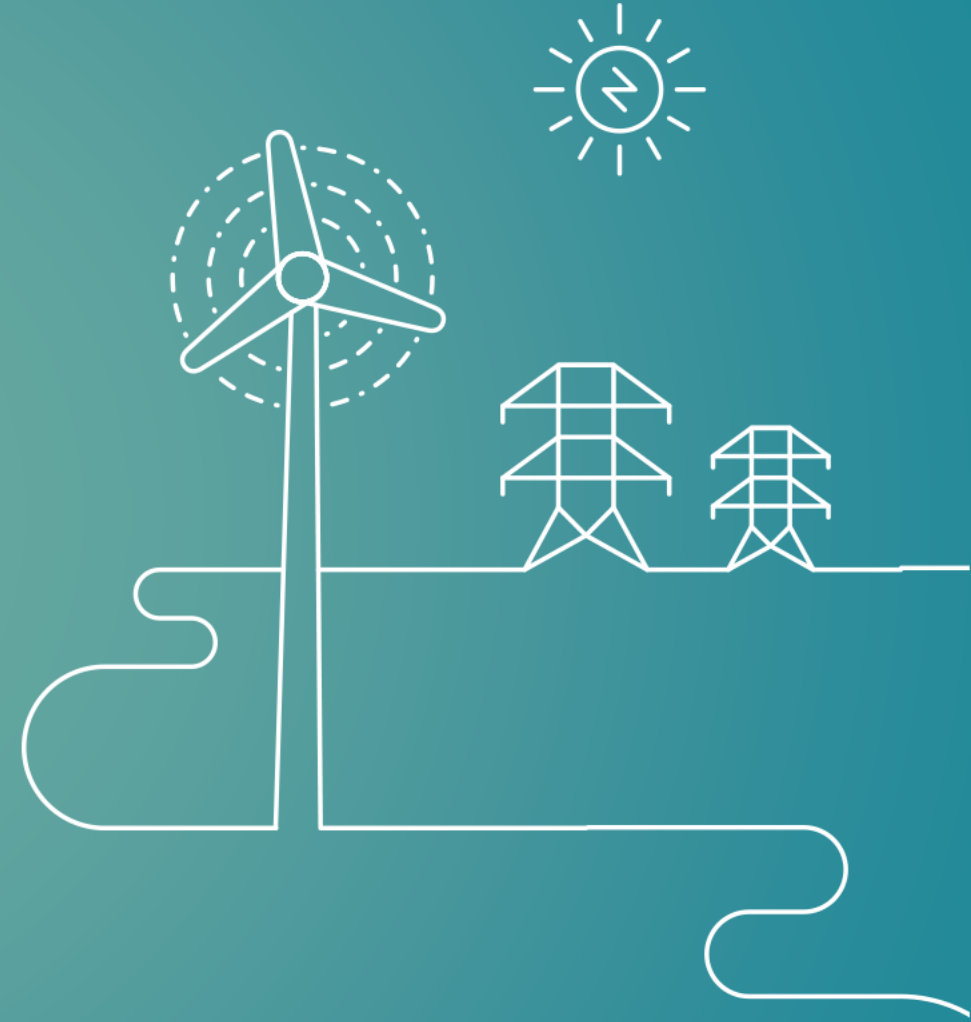
### Agenda

- Start : 14:00 ; end: 17:00
- Context, objective; planning and rules of engagement (20') → Thibaut Gérard
- Q&A (70') → Sybille Mettens
- Break (30')
- Overview of PQ process – high level IT interfaces → Joren Wuyts (45')
- Next steps (15')



# Implementation Task Forces

Context, objectives and planning



# CRM Implementation plan 2020 Objectives



Initiate discussion with market parties on CRM **operational aspects**



**Procedures** based  
on design  
principles (Market  
Rules)

**Tools & IT  
interface** (if  
relevant)

**Use cases** to illustrate  
concrete application of  
CRM procedures

CRM design notes  
v1 (Oct. 19)



Functioning Rules  
v1 – Nov. 2019



CRM design notes  
v2 (March 20)



Functioning Rules v2



Annex Functioning Rules v2



Use Cases &  
Mock ups



# CRM Implementation plan 2020

## What's the difference with CRM Task Forces

### Functioning Rules v1 – Nov. 2019



### Functioning Rules v2 2020



- ❑ High level principles in Functioning Rules;
- ❑ Details and process-related aspects in the Capacity Contract

- ❑ Details and process-related aspects in the Functioning Rules;
- ❑ Capacity Contract limited to general conditions ; financial aspects; ... (Contractual Counterparty yet to be identified)



**Design evolutions** are discussed in **CRM Task Forces** (same configuration than in 2019)

**Additional layer of detail** (process related) ; IT interfaces; Use cases to illustrate the concepts ...  
**are discussed in Implementation Task Forces**



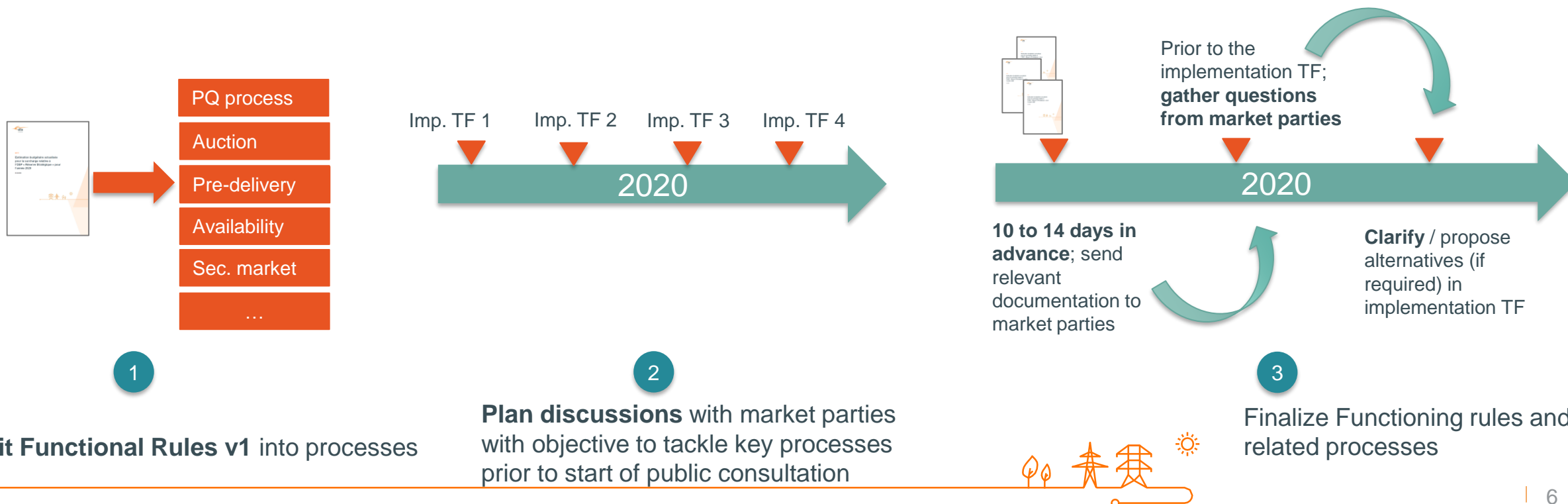
# CRM Implementation plan 2020

## Proposed approach



How?

- ✓ **Translate** high level design principles into operational processes
- ✓ Gather **informal feedback** from market parties
- ✓ Adapt proposal and organize **public consultation** (Functioning Rules and Annexes)



## CRM Implementation plan 2020

### Proposed approach



#### Targeted audience

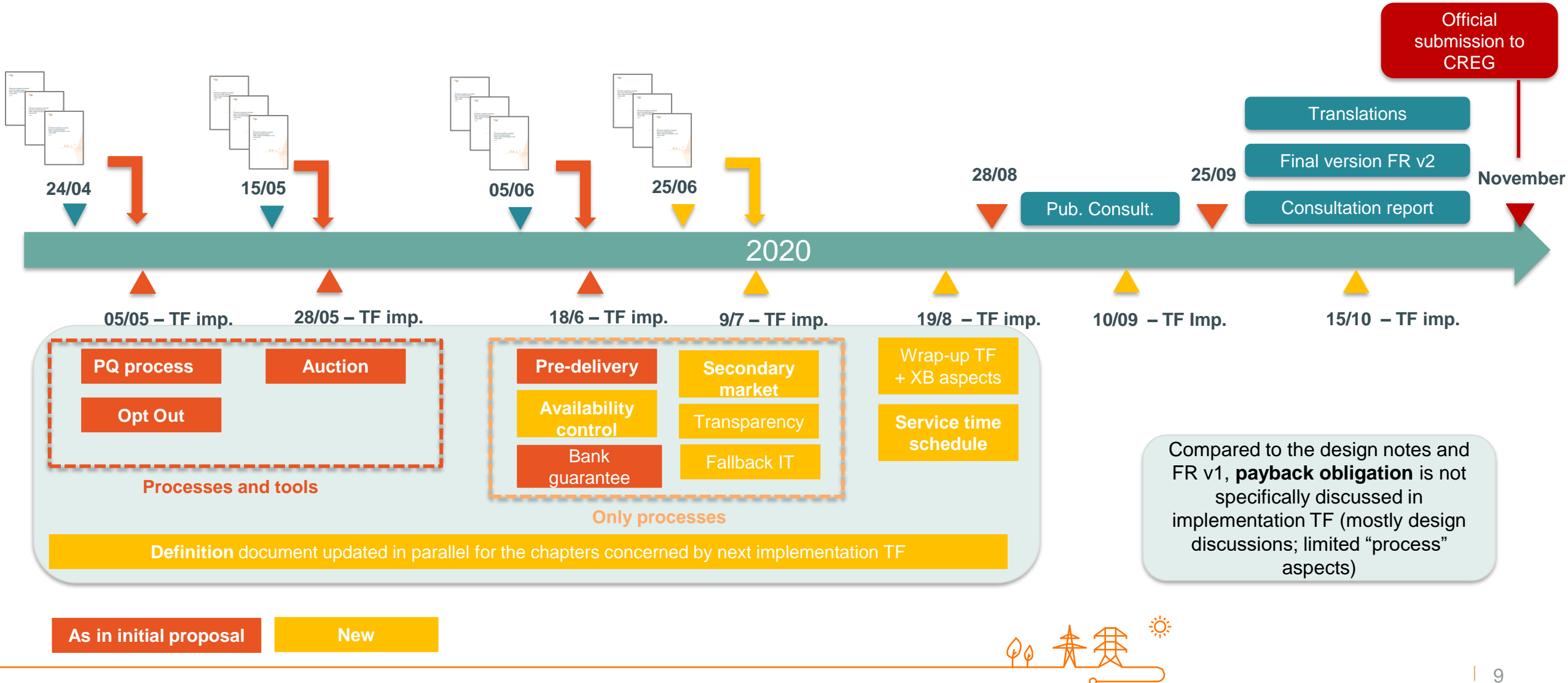
- ✓ Similar audience than TF CRM; to better understand how design principles are translated into operational processes.
- ✓ Specific audience – operational teams that will – in the end – submit a Prequalification File and follow the CRM processes;

### Important remarks

- ❑ **Functioning rules are not frozen** after the implementation TF. ELIA remains of course available to further clarify (bilaterally; TF CRM; Q&A; next implementation TF;...) specific aspects when required;
- ❑ **Format is not ideal** (Skype) but imposed by the current situation (COVID-19). As it will probably be the same (Skype) approach for the following implementation TF; **feedback on how to adapt / improve it is welcome (per email to TF mailbox)**.
- ❑ Specific sessions (tools) and **adapted training material** is being developed in parallel and shall be made available to market parties end 2020 / begin 2021. **Current deliverables are oriented to prepare the Functioning Rules public consultation** (to start after summer 2020) and are not meant to be fully self supporting. (Hence to be considered in parallel to the other documents available such as design notes; use cases; Q&A;...)

# Implementation plan 2020

## Updated proposal – 05/05/2020





# Prequalification processes

Q&A – structure and rules of engagement



## Q&A – Prequalification process Structure

- Questions related to **legal framework**

Can ELIA clarify what is required wrt **CO<sub>2</sub>** emissions?

How to read the requirement on **production license**?

- Questions related to **XB participation**

Who has the **legal obligation to prequalify**? The definition of « Capacity Holder » is unclear. Is it equal to the holder of an individual production license?

How to understand the requirement « **compliance with relevant legal and regulatory framework** »? What happens in case of change during PQ process; not affecting such process?

- Questions involving **third parties**:

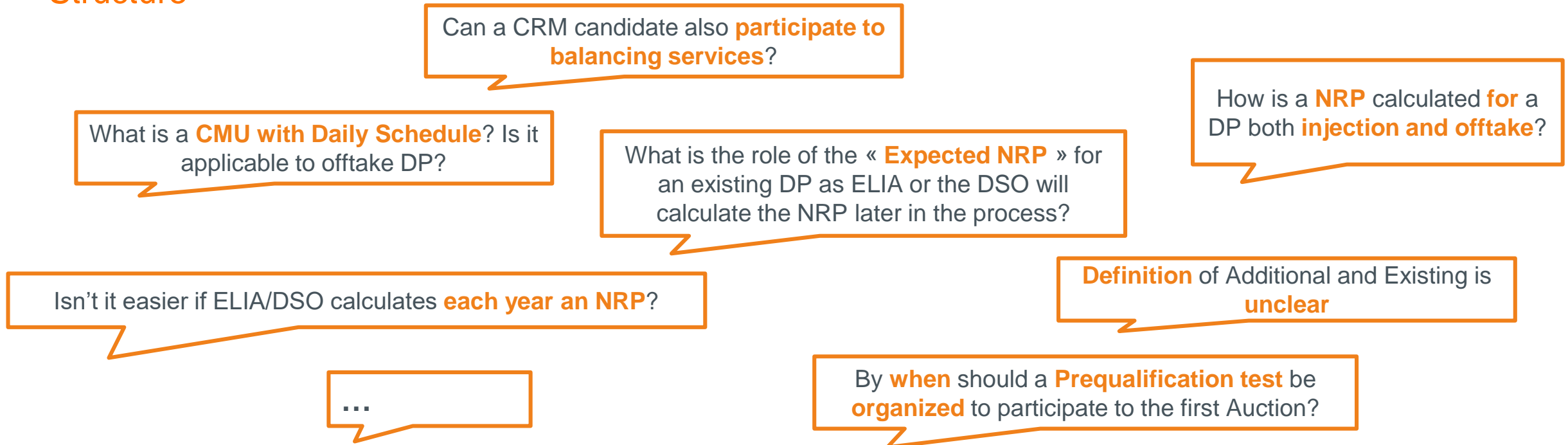
- FPS Economy (production license)
- CREG (investment files)
- « Certified national body » (CO<sub>2</sub> emissions)
- Etc.

How does **XB capacity**:

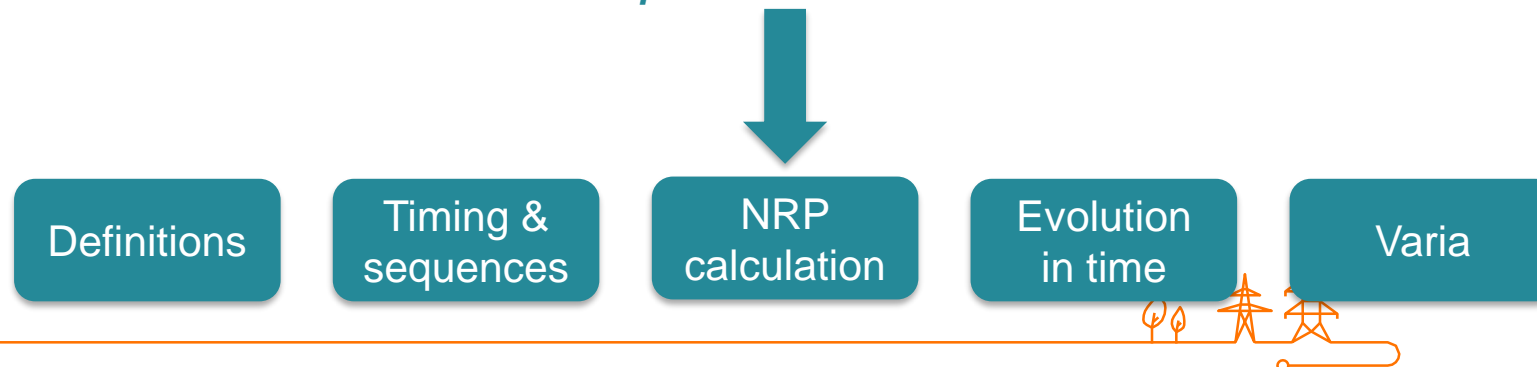
- Falls into the definitions (Existing/Additional DP)?
- Complies with the relevant legal and regulatory framework?
- Is identified as a delivery point (EAN codes may not exist, etc.)?

- Questions related to legal framework or third parties will be answered to by ELIA later on (alignment needed)
- XB participation (direct and indirect) must first be discussed on high level design principles in TF CRM (foreseen by June 2020) + KB XB now available on FPS's website

## Q&A – Prequalification process Structure



*ELIA clustered questions received into 5 themes*



## Q&A – Prequalification process

### Rules of engagement

**Today:** Focus on process-related and generic questions in TF Implementation (5/5)

**Later on:** Come back to market with the rest of the answers:



**Questions** (legal, XB, other Functioning Rules chapter,..) **not answered** to today will be:

- Discussed with the corresponding market party;
- Used (non-confidential ones) to complete the Q&A document made available to everyone later on ELIA's website



**Extension of the deadline to 22/05/20** to raise specific questions on Prequalification aspects (Inc. Opt-Out):

- Time taken on the agenda of the next TF implementation (Auction – 28/05/20) to tackle key questions (if any, e.g related to Closed Distribution Systems)
- If added value of proposed approach → Extension by default to the other chapters (1<sup>st</sup> release of docs 10 to 14 days prior to implementation TF and possible 2<sup>nd</sup> round in the next implementation TF)





## Q&A – Prequalification process

### Rules of engagement

- **ELIA is always available** for specific clarification or bilateral discussions
- Specific **training sessions** (to learn how to use Prequalification platform, Auction platform) will be organized with market parties at the beginning of 2021 to prepare and support market parties' operational teams.
- **Documents** proposed **may evolve based on collected feedbacks** and further alignment with relevant authorities
- **Feedback** on how to improve organization / content of such TF is **always welcome**



## Q&A – Prequalification process

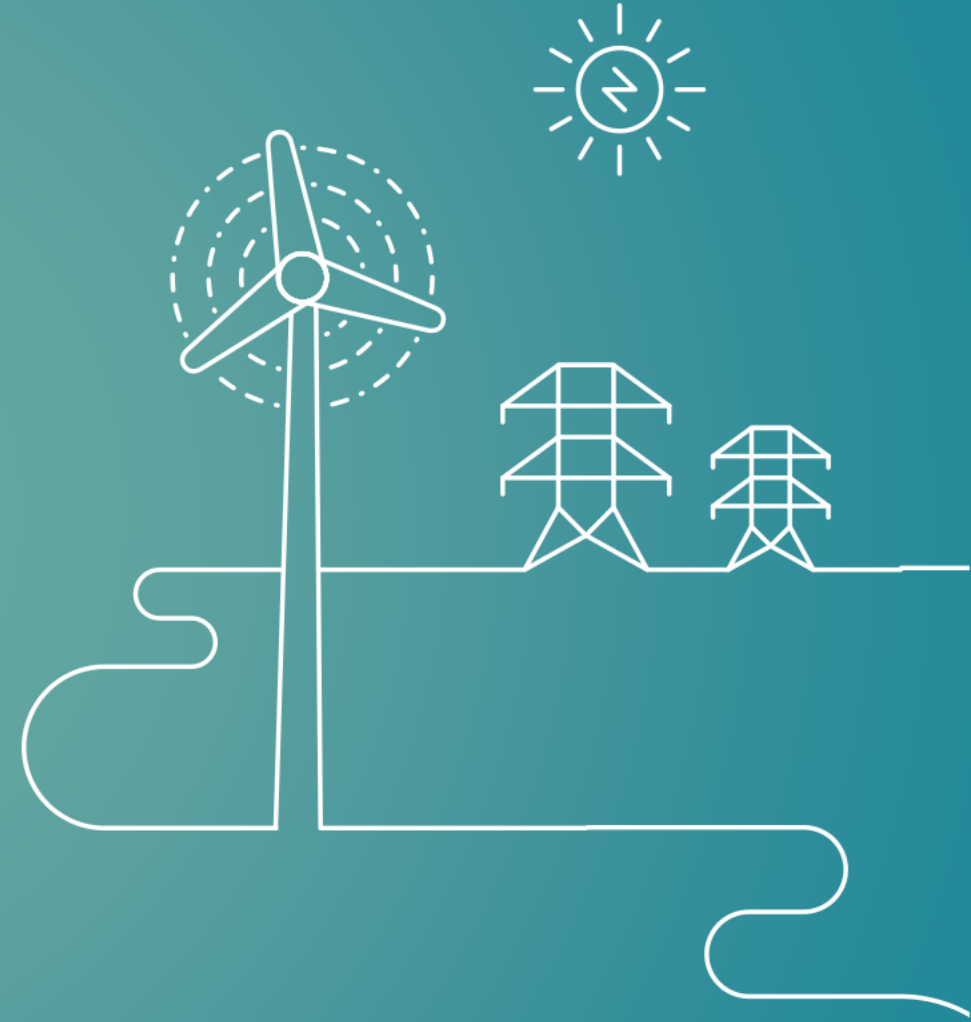
### Rules of engagement

- **After each slide**, ELIA will leave **time to answer questions**
- **Questions** should be **asked via** the **chatbox** to avoid people speaking at same time
- **Micros on mute**



# Prequalification processes

Q&A - Definitions



## Q&A – Prequalification process

### Definitions

#### Questions

Is it correct that only **production assets** have a **daily schedule** obligation?

If a Grid User foresees a small **capacity increase** and that implementation is foreseen after the **Prequalification File submission** date **but prior to** the **Auction**; is the related CMU considered as « Existing » or « Additional »?

Why does ELIA specify a « **first come first served** » principle for one DP? How could same DP be offered by 2 CRM Candidates?

#### Answers

The **daily schedule** obligation is indeed **linked to production assets** (today). This may however evolve in the future (related to « ICAROS » project ).

ELIA determines the **status of a CMU** (Unproven, Additional or Existing) **at the moment of Prequalification File submission** (when determining NRP). In the question, it corresponds then to « Additional ».

ELIA shall clarify the applicable rule **in case** a CRM Candidate comes to ELIA with a **Prequalification File related to an already prequalified DP** (even if in theory, ELIA agrees it should not happen).





# Q&A – Prequalification process

## Definitions

Definitions

Timing &  
sequence

NRP  
calculation

Evolution in  
time

varia

### Questions

Is « **Financial Security** » to be understood as conditional bank guarantee?

What is meant with « indicate **partial DA, Intraday and Balancing price** or declared intraday and balancing prices? Isn't it only the « Declared DA »?

### Answers

Yes; the conditional bank guarantee will be one of the concrete elements gathered under the terminology « Financial Security ». This specific section is being **elaborated** in the context of Pre-delivery monitoring and detailed **in Implementation TF on 18/6**.

ELIA reminds that these parameters are used in the context of **availability monitoring** (and will be further detailed in the specific chapter of the Functioning Rules). Furthermore, they only apply to CMUs without daily schedule and are optional. The only obligation for CMUs without Daily Schedule obligation is to **indicate** at least **a Declared Day Ahead Price** to which it will respond with full capacity.



# Q&A – Prequalification process

## Definitions

Definitions

Timing &  
sequence

NRP  
calculation

Evolution in  
time

varia

### Questions

What does « **nameplate capacity** » mean? Is this a declared value or is it based on Prequalification tests measured according to principles of section 6? How will ELIA use these info?

What does « **full technical capacity** » mean? Is this a declared value or is it based on Prequalification tests measured according to principles of section 6? How will ELIA use these info?

### Answers

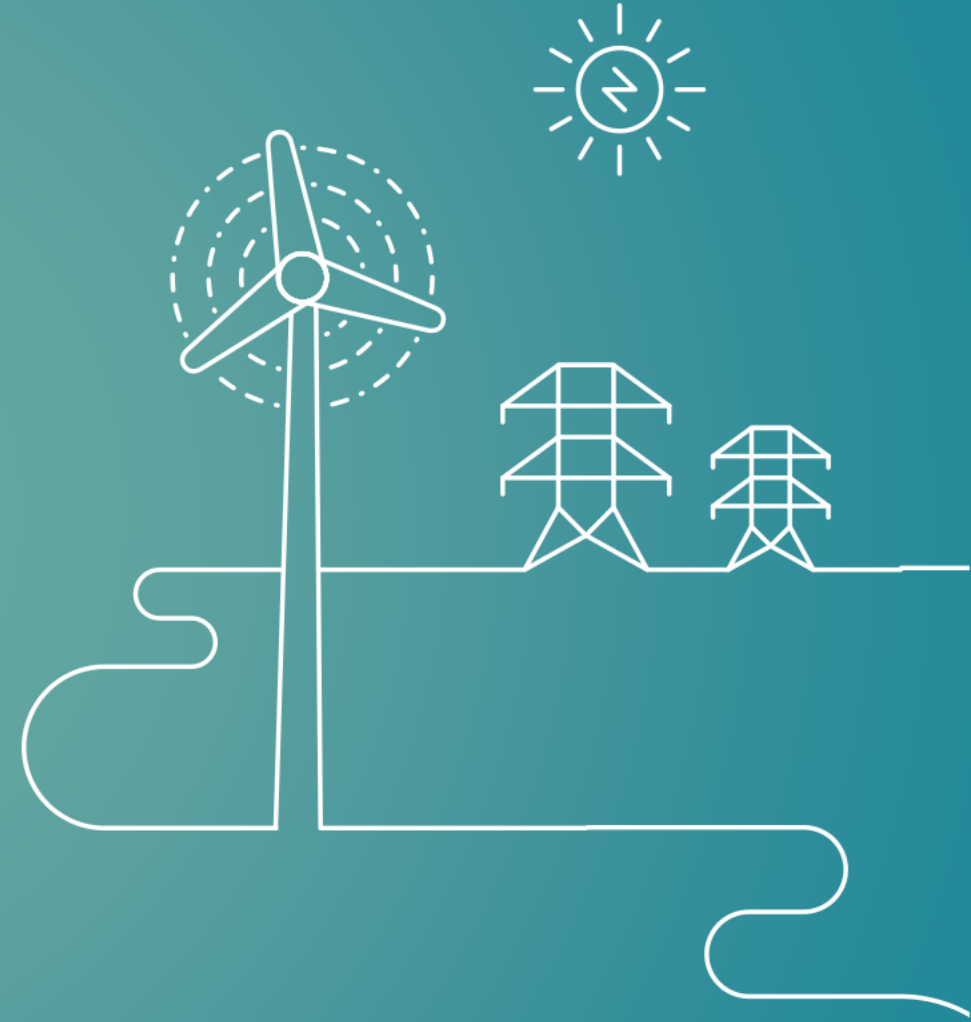
The nameplate capacity is normally given by the manufacturer. It does not influence the determination of NRP and is not measured by ELIA during the Prequalification test. It must be seen as **complementary information** relevant for ELIA **when verifying some PQ parameters**.

The full technical capacity corresponds to the maximal (in theory) injection capacity. It is not measured by ELIA during Prequalification test. It must be seen as **complementary information** relevant for ELIA **when verifying some PQ parameters**.



# Prequalification processes

Q&A – Timing & sequence

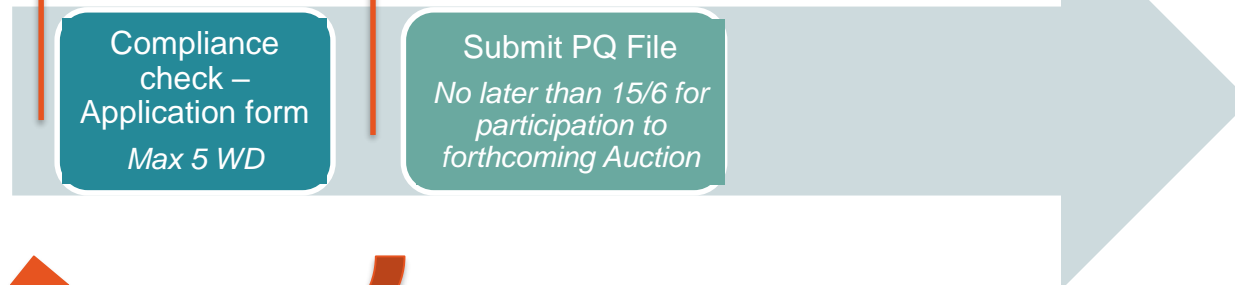


## Q&A – Prequalification process

### Timing related to the application form

Application Form  
Submission date

Access granted to PQ  
platform and auction demo

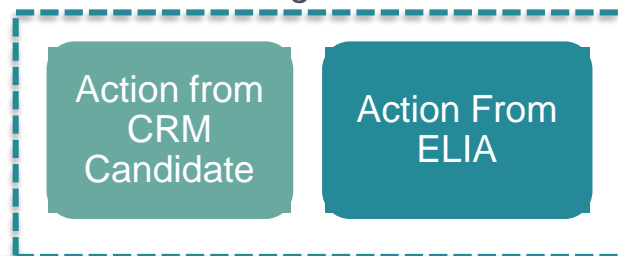


In case of non compliance,  
Capacity Holder may  
introduce again an  
application form

The procedure provides an **access to the Prequalification Platform** once compliance check is positive. Is there an automatic message generated by ELIA to confirm the acceptance and does this mean that the CRM Candidate has only 5 WD to submit his Prequalification File ? (if yes, could a CRM Candidate have access to PQ platform earlier)

- Yes, an **automatic notification** will be foreseen by ELIA.
- No, there is **no limitation in time** for a CRM Candidate **to submit** his **Prequalification File** once he gets access to the Prequalification Platform. The CRM Candidate shall however submit his Prequalification File before 15/6 if he intends to participate to the forthcoming Auction.

#### Legend

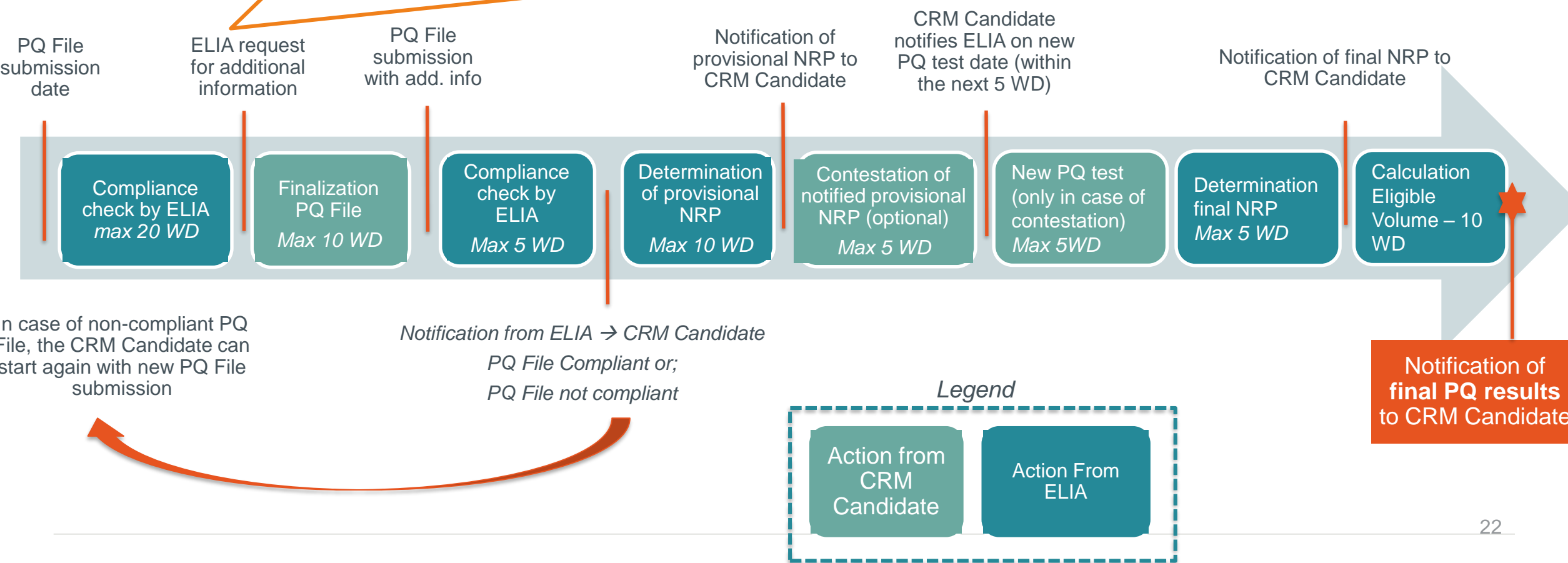




# Q&A – Prequalification process

## Timing related to the Prequalification File

**How** is ELIA going to **monitor that no change is submitted within the 70 WD** period of time (treatment of PQ File)?  
 Wouldn't it be better to foresee an iterative process to ensure the CRM Candidate gets several opportunities to provide missing info and by doing so obtain the « compliant » status?

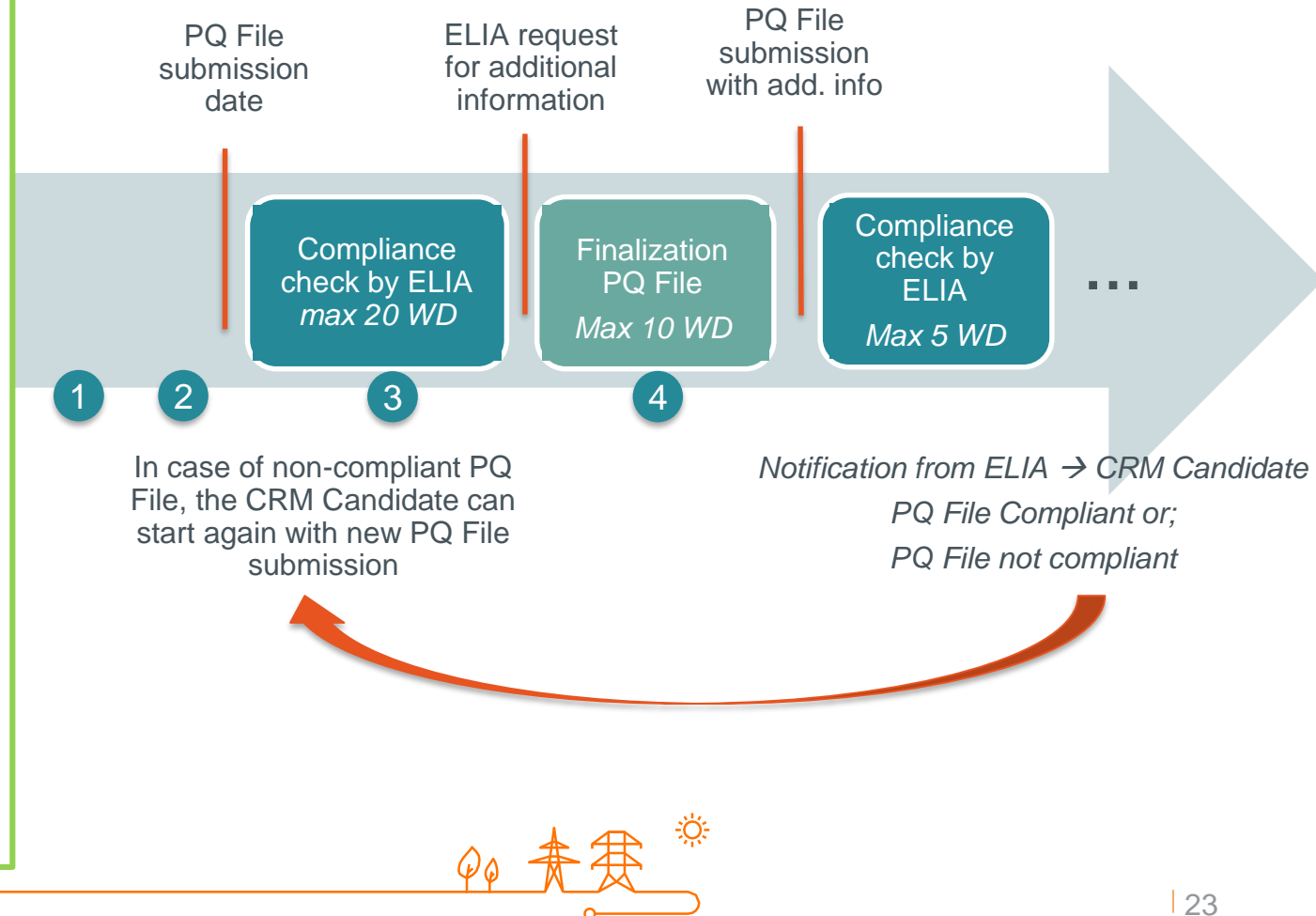


## Q&A – Prequalification process

### Timing related to the Prequalification File

- From PQ submission date, access to the PQ File will be frozen on the PQ platform.
- There are already **several opportunities** for a CRM Candidate **to provide missing info** in the current procedure:

- 1 When filling in his PQ File: CRM Candidate can always **contact ELIA** to get additional explanation (kind of data, format, etc.)
- 2 When filling in his PQ File: PQ platform will perform some **automatic checks** (e.g: if additional DP, project execution plan needed)
- 3 When verifying the PQ File compliance: **ELIA may take contact** with CRM Candidate to clarify / discuss about submitted info. It will not just be a compliance / non-compliance automated decision
- 4 When completing a non-compliant PQ File: ELIA remains available to explain / **support the reason of non-compliance**



Definitions

Timing &  
sequence

NRP  
calculation

Evolution  
in time

varia

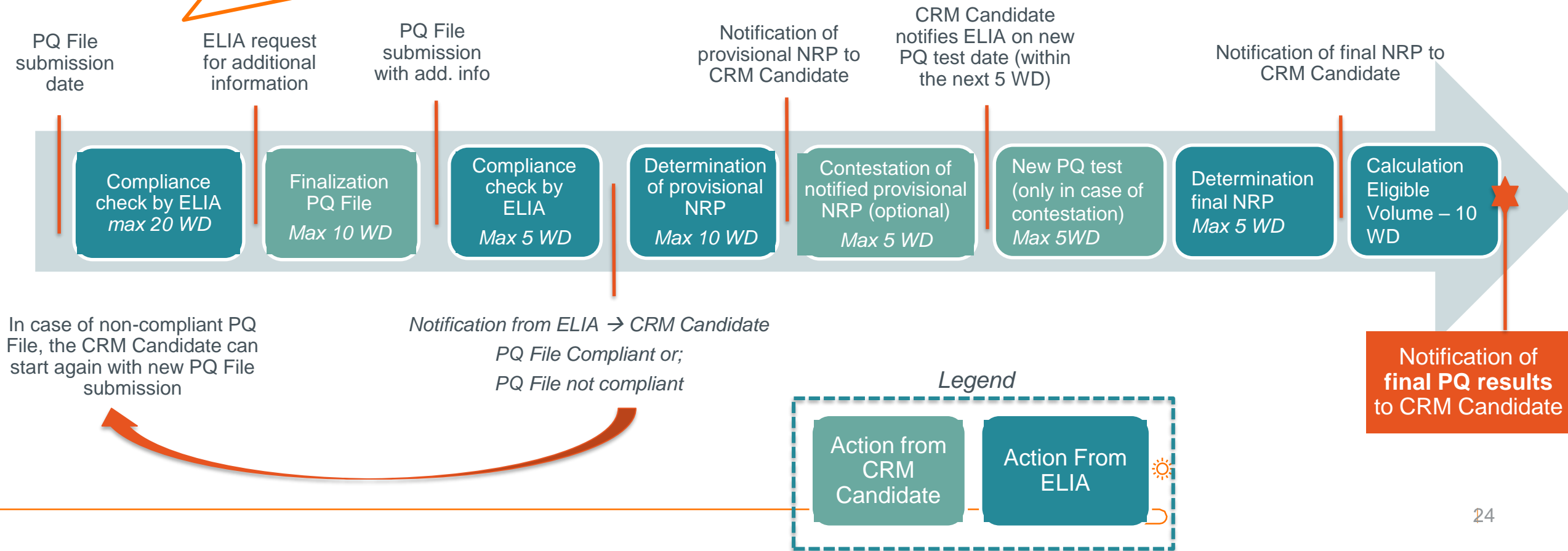
ELIA Group

## Q&A – Prequalification process

### Timing related to the NRP

The **timing for the determination** and communication **of NRP** is unclear. When is it calculated by DSO or ELIA?

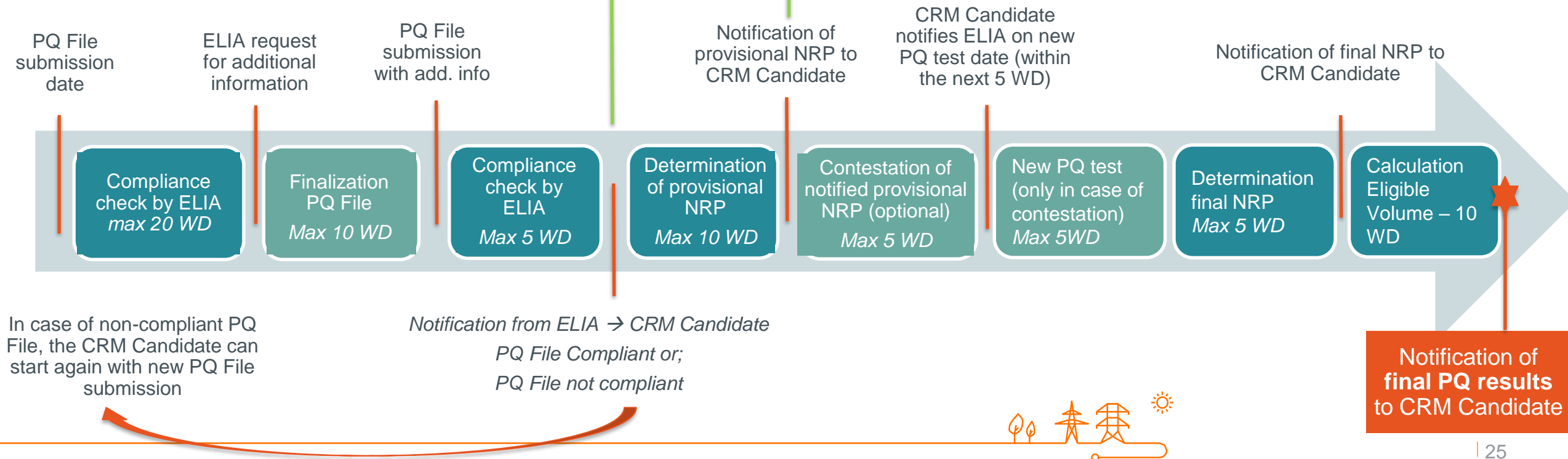
What is the **latest time to perform a PQ test** in order to participate to first Auction?



## Q&A – Prequalification process

### Timing related to the NRP

ELIA determines the **provisional NRP** from the moment the **PQ file** is « **compliant** ». The **PQ test** (use of NRP determination method 3) shall be organized **within 35 WD from PQ File submission date**.



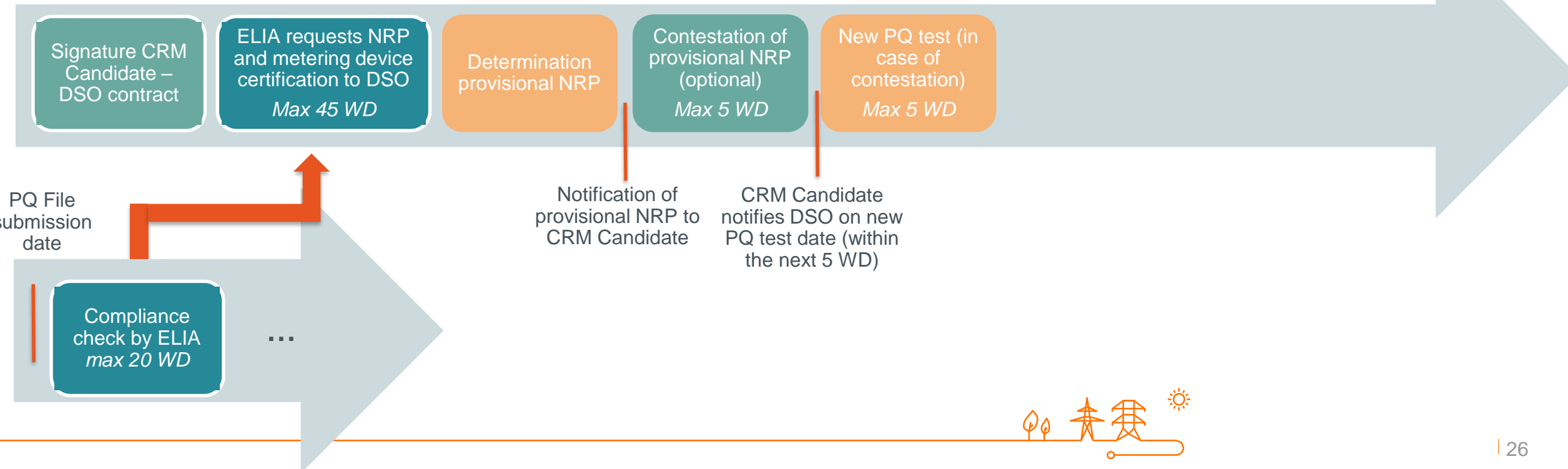


## Q&A – Prequalification process

### Timing related to the NRP

For a DSO connected Delivery Point, a maximum of **45 WD** is foreseen **from the moment ELIA requests a final NRP** calculation **to** the concerned **DSO**. Such request can only be made once the PQ File is submitted by the CRM Candidate on the PQ platform.

#### Process related to DSO connected Delivery Points



## Q&A – Prequalification process

### Timing related to the Prequalification Process

Is it possible to **start PQ process earlier** (at least as of 15/05/2021) to smoothen the Prequalification Process in 2021?

Yes. It is indeed ELIA's intention to **facilitate the start of Prequalification Process** as much as possible in 2021. The current target is 15/05/21. Earlier start depends on IT implementation (feasibility shall be confirmed by ELIA later on).

**Choice of derating factor:** A non-compliance with the methodology may lead to a termination of the contract. Isn't it more an iterative process in which ELIA could always correct the indicated value according to such methodology in case of identified misunderstanding?

As a generic principle, the **CRM Candidate** is **responsible for the data submitted** in his PQ File. ELIA will randomly perform some verifications. In case of inconsistencies, a penalty could apply (such penalty regime is not finalized yet and will be discussed later on with market parties).

How will ELIA communicate **PQ results in due time** with a maximal duration of 70 WD; possibility to submit PQ File until 15/6 and need to finalize some PQ Files by 01/09?

ELIA proposes a **generic timing (total of 70 WD)** which summarizes the **worst case scenario** (contestation of NRP, file incomplete, etc.). For PQ Files requiring finalization by 01/09, ELIA will take less time than the maximal period allowed in each step.



# Prequalification processes

Q&A – NRP calculation



## Q&A – Prequalification process

### NRP Calculation

Definitions

Timing &  
sequence

NRP  
calculation

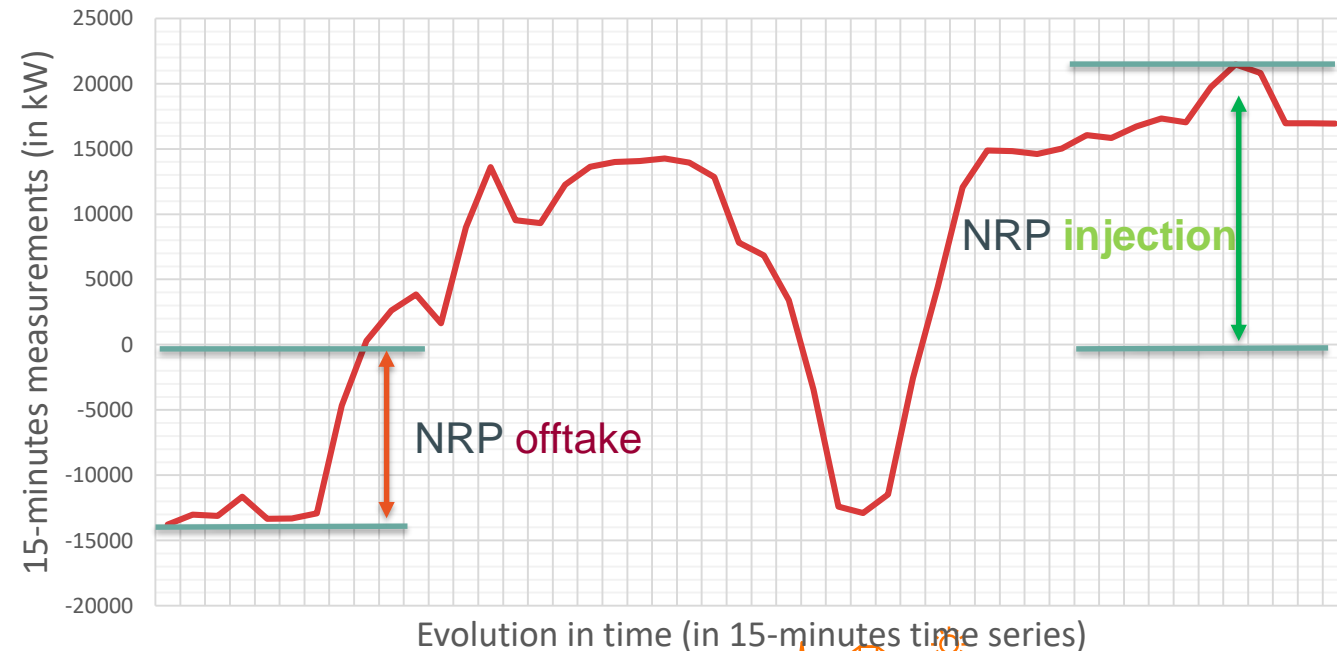
Evolution  
in time  
ELIA Group

varia

Use of method 3 (PQ test): is such **test at base conditions** (temperature, iso, etc.) or is it the maximum measured?

The method 3 (organization of new PQ test), identifies the **NRP as the max measured** at the moment of test.

#### Metering data from 03/01 12:00 to 04/01 23:45



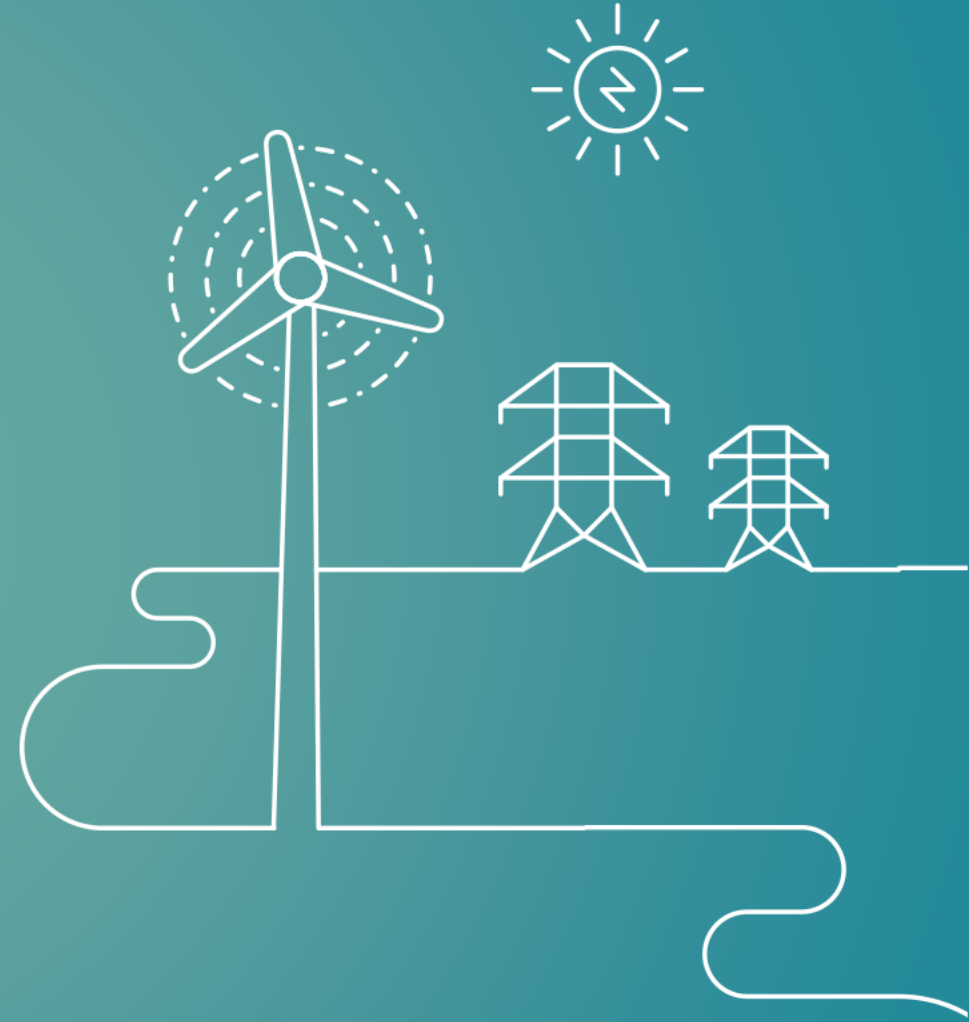
Could ELIA **clarify** how the **NRP** of a Delivery point **combining injection and offtake** is calculated?

ELIA applies methodologies for both offtake DP & injection DP in parallel.  
Corresponding NRP = **NRP « offtake » + NRP « injection »**.



# Prequalification processes

Q&A – Evolution in time



## Q&A – Prequalification process

### Evolution in time

Definitions

Timing &  
sequence

NRP  
calculation

Evolution  
in time

varia

ELIA Group

Can a prequalified **CMU** be **transferred to another entity**?

Yes, following the principles proposed in section 8 (evolution in time). PQ CRM candidate needs **first** to **delete the related CMU** while the **other entity** taking over, needs then to **introduce new PQ File**.

Wouldn't it be clearer to **request a computation of the NRP each year** prior to an Auction (even for PQ File not adapted by CRM Candidate following ELIA's procedure for evolution in time)?

Evolution in time process seems not to consider **changes resulting from FSP-DSO contract** (or CRM Candidate – DSO agreement)?

**GU Declaration** – what if validity period differs from delivery period of CRM Contract?

The chapter « Evolution in time » applies: PQ CRM Candidate shall introduce an **updated GU Declaration when the validity date has passed**.

- As foreseen in chapter 8, **the CRM Candidate must confirm each year the validity of his PQ File** to renew his participation to next Auction. In parallel, evolution of key parameters (e.g: NRP) on DSO or TSO level can also generate an update of the PQ File parameters.
- ELIA keeps the right to perform **random verification** (e.g: recalculate NRP) of declared data and apply penalty regime accordingly.





# Prequalification processes

Q&A – Varia



## Q&A – Prequalification process

### Varia

Definitions

Timing &  
sequence

NRP  
calculation

Evolution  
in time

varia

Elia Group

By when will ELIA share the **remaining Annexes**?

ELIA will finalize the remaining Annexes and share them with market parties at latest on the last Implementation TF **before summer holidays** (09/07/20)

Can ELIA confirm / clarify the possible **combination** of CRM **with** other **flexibility products** ?

Yes, the **combination between a CRM participation and a flexibility products** is allowed.

Minimum requirements to be used in Annex F (**GU Declaration**): can ELIA use standard template approved by regulator to avoid confusion?

**GU Declaration** template proposed in Annexes is a **standard template** (similar to balancing products). ELIA also reminds that the Annexes are part of the documents approved by regulator.



## Q&A – Prequalification process

### Varia

Definitions

Timing &  
sequence

NRP  
calculation

Evolution  
in time

varia

ELIA Group

Are there any **IT requirements** needed on the side of CRM Candidate?

The CRM platform is a web platform. Nothing shall specifically be installed by CRM Candidate. The only requirements that might impact CRM candidate identified so far concerns the set up of **communication channel** to send / acknowledge an **availability test signal**.

Why should a Capacity Holder choose a **Derating Factor for the fast track process**?

ELIA needs a Derating Factor to apply on the Fast Track NRP in order **to determine the Fast Track volume** to correct the volume in the Auction. In the Auction Bids, no Fast Track Volume is used.



# Prequalification processes

Overview of IT interface – Mock-up

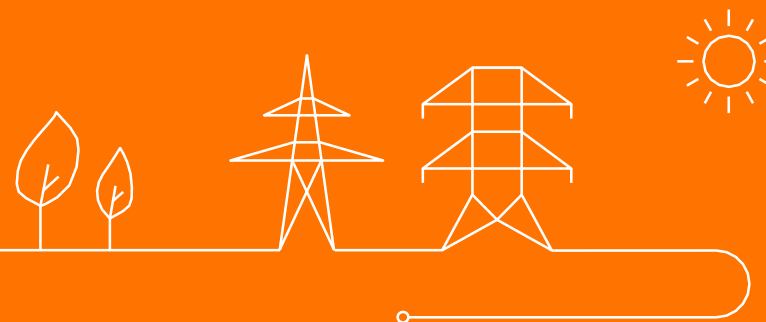


# Introduction

- The **Prequalification Platform** is a tool to support the CRM Prequalification processes
- The following slides show illustrations of the **User Interface** for the Capacity Holder/(Prequalified)CRM Candidate
- Use cases:
  1. Registration & login
  2. Creating and submitting a Standard CMU
  3. Creating and submitting a Virtual CMU
  4. Creating and submitting a Fast Track CMU
  5. Change Account Details
- Important remark: The following UI mock-ups are for illustrative purposes only. These are not exhaustive and still subject to change.



# Registration & login





## CRM Platform Registration

This page is for company registrations only. If you want to register as a natural person, please contact "XX" (email address).

### Company Information

Company Name\*

Applicable law\*

Address Head Office

Street\*

House Number\*

ZIP\*

City\*

Country\*

Telephone

Fax

Registration number (VAT)\*

Business number\*

Date of foundation

Energy Identification Code (EIC)\*

### Bank account details for payment and invoices

### Bank account details for payment and invoices

Company name	<input type="text"/>
Email address	<input type="text"/>
Bank name*	<input type="text"/>
Street	<input type="text"/>
Postal code	<input type="text"/>
City	<input type="text"/>
Country	<input type="text"/>
IBAN*	<input type="text"/>
SWIFT/BIC*	<input type="text"/>
Currency for ordering & invoicing*	<input type="text"/>

### Contact details

Language*	<input type="text"/>
Civil status	<input type="text"/>
First name*	<input type="text"/>
Last name*	<input type="text"/>
Function*	<input type="text"/>
Telephone	<input type="text"/>
Mobile*	<input type="text"/>
Email*	<input type="text"/>

\*Fields with an asterix are mandatory



## Platform for the Capacity Remuneration Mechanism

Log in

ID

Password

Log in

Forgot password

Capacity contract framework (Open)

Download

Eligibility criteria (Open)

Download

Production license requirements (Open)

Download

☐ I agreeMaximal CO<sup>2</sup> emission thresholds (Open)

Download

☐ I agree

[Legal and regulatory framework](#) [\(Open\)](#)

Download

☐ I agree

Continue

ENG

## Prequalification Platform

Add new CMU

Add new fast-track CMU

Prequalification

Auction Demo

Auction

Reports

My Account

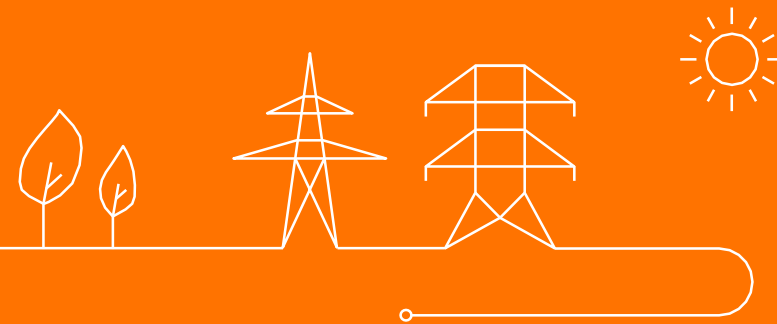
Logout

### CMU Overview

### CMU information

CMU ID ▲	Status ▲	Preq. date ▲
ID1	Approved	
ID2	Submitted	
ID3	Rejected	
ID4	Approved	
ID5	Saved	
ID6	Approved	
ID7	Prequalified	dd/mm/yy

# Creating and submitting a standard CMU





ENG

## Prequalification Platform

Add new CMU

Add new fast-track CMU

Prequalification

Auction Demo

Auction

Reports

My Account

Logout

### CMU Overview

### CMU information

CMU ID ▲	Status ▲	Preq. date ▲
ID1	Approved	
ID2	Submitted	
ID3	Rejected	
ID4	Approved	
ID5	Saved	
ID6	Approved	
ID7	Prequalified	dd/mm/yy

Prequalification

Auction Demo

Auction

Reports

My Account

Logout

## CMU Overview

## CMU information

CMU ID ▲	Status ▲
ID1	Approved
ID2	Submitted
ID3	Rejected
ID4	Approved
ID5	Saved
ID6	Approved
ID7	Prequalified

Which prequalification process do you want to start?

- ☒ Standard Prequalification Process (existing CMU or additional CMU)
- ☐ Specific Prequalification Process (Virtual CMU)

Confirm

Cancel

Prequalification

Auction Demo

Auction

Reports

My Account

Logout

CMU Overview

CMU ID ▲	Status ▲	Preq. date ▲
ID1	Approved	
ID2	Submitted	
ID3	Rejected	
ID4	Approved	
ID5	Saved	
ID6	Approved	
ID7	Prequalified	dd/mm/yy
ID8	Saved	

CMU information

CMU ID  
Status  
Creation date

ID8  
Saved  
dd/mm/yyyy

+ Add DP

ENG

Prequalification

Auction Demo

Auction

Reports

My Account

Logout

## Add Delivery Point

### Delivery Point

EAN Access point

123456789123456789

EAN Delivery point

123456789123456789

Save

Cancel

No EAN available

## Add Delivery Point

## Delivery Point

EAN Access point 123456789123456789

EAN Delivery point 123456789123456789

## Delivery Point Data

Grid Type connection Distribution grid

Single line diagram

Technology Gas Turbine

Other DP's on the same geographical area

Technical dependency with other Delivery Points

Opt-out volume repartition

CDS - CRM candidate Agreement

## Data specific for existing Delivery points

Expected nominal reference power

CO2 emission

CO2 emission attestation

Methodology for NRP calculation Method 1: Historical measurement data

Reference of related balancing result for NRP method 2 mFRR Prequalification test

Prequalification test date for NRP method 3 / /

Baseline adjustment

Unshedable margin

Nameplate capacity of generation

Net injection or net offtake Net injection

Full technical injection capacity

Full technical offtake capacity

Grid user declaration

Renouncement of operating aid

Save

Cancel

Logout

## Add Delivery Point

### Delivery Point

EAN Access point

EAN Delivery point

### Delivery Point Data

Grid Type connection

Single line diagram  

Technology

Other DP's on the same geographical area

Technical dependency with other Delivery Points


Opt-out volume repartition

CDS - CRM candidate Agreement  

### Data specific for additional delivery points

Declared nominal reference power

Existing connection volume

Production permit delivered by FOD or a proof of submission  

Save

Cancel

Logout



ENG

## Prequalification Platform

Add new CMU

Add new fast-track CMU

Prequalification

Auction Demo

Auction

Reports

My Account

Logout

### CMU Overview

CMU ID ▲	Status ▲	Preq. date ▲
ID1	Approved	
ID2	Submitted	
ID3	Rejected	
ID4	Approved	
ID5	Saved	
ID6	Approved	
ID7	Prequalified	dd/mm/yy
ID8	Saved	

### CMU information

CMU ID  
Status  
Creation date

ID8  
Saved  
dd/mm/yyyy

Edit CMU details

Submit CMU

+ DP1

+ DP2

+ DP3

Edit DP



Edit DP



Edit DP



+ Add DP

ENG

Prequalification

Auction Demo

Auction

Reports

My Account

Logout

## Edit CMU details

### CMU details

Conditional bank guarantee



Financial institution of bank guarantee

SLA

Derating factor

Project ID

Create new project ID

Project execution plan



Expected start date of the project



ID of technical agreement

Fluxys Signed conditional offer



Opt-out notification



### CMU data to be provided before transaction period

Declared day-ahead price

NEMO

Save

Cancel

Prequalification

Auction Demo

Auction

Reports

My Account

Logout

## CMU Overview

CMU ID ▲	Status ▲	Preq. date ▲
ID1	Approved	
ID2	Submitted	
ID3	Rejected	
ID4	Approved	
ID5	Saved	
ID6	Approved	
ID7	Prequalified	dd/mm/yy
ID8	Saved	

## CMU information

CMU ID  
Status  
Creation date

ID8  
Saved  
dd/mm/yyyy

Conditional bank guarantee <...>  
Financial institution <...>  
SLA <...>  
Derating factor <...>  
Project ID <...>  
Project execution plan <...>  
Project start date - end date <...>  
ID of technical agreement <...>  
Opt-out notification <...>  
Declared day-ahead price <...>  
NEMO <...>

Edit CMU details

Submit CMU

+ DP1

+ DP2

+ DP3

Edit DP



Edit DP



Edit DP



+ Add DP

Prequalification

Auction Demo

Auction

Reports

My Account

Logout

## CMU Overview

CMU ID ▲	Status ▲	Preq. date ▲
ID1	Approved	
ID2	Submitted	
ID3	Rejected	
ID4	Approved	
ID5	Saved	
ID6	Approved	
ID7	Prequalified	dd/mm/yy
ID8	Submitted	

## CMU information

CMU ID	ID8
Status	Submitted
Creation date	dd/mm/yyyy
Conditional bank guarantee	<...>
Financial institution	<...>
SLA	<...>
Derating factor	<...>
Project ID	<...>
Project execution plan	<...>
Project start date - end date	<...>
ID of technical agreement	<...>
Opt-out notification	<...>
Declared day-ahead price	<...>
NEMO	<...>

+ DP1

+ DP2

+ DP3

Prequalification

Auction Demo

Auction

Reports

My Account

Logout

## CMU Overview

CMU ID ▲	Status ▲	Preq. date ▲
ID1	Approved	
ID2	Submitted	
ID3	Rejected	
ID4	Approved	
ID5	Saved	
ID6	Approved	
ID7	Prequalified	dd/mm/yy
ID8	Rejected	

## CMU information

CMU ID  
Status  
Creation date  
dd/mm/yyyy

Conditional bank guarantee <...>  
Financial institution <...>  
SLA <...>  
Derating factor <...>  
Project ID <...>  
Project execution plan <...>  
Project start date - end date <...>  
ID of technical agreement <...>  
Opt-out notification <...>  
Declared day-ahead price <...>  
NEMO <...>

Edit CMU details

Resubmit CMU

+ DP1

+ DP2

+ DP3

Edit DP



Edit DP



Edit DP





Prequalification

Auction Demo

Auction

Reports

My Account

Logout

## CMU Overview

CMU ID ▲	Status ▲	Preq. date ▲
ID1	Approved	
ID2	Submitted	
ID3	Rejected	
ID4	Approved	
ID5	Saved	
ID6	Approved	
ID7	Prequalified	dd/mm/yy
ID8	Rejected	

## CMU information

Financial institution <...>  
SLA <...>  
Derating factor <...>  
Project ID <...>  
Project execution plan <...>  
Project start date - end date <...>  
ID of technical agreement <...>  
Declared day-ahead price <...>  
NEMO <...>



DP1

Edit DP



Grid type connection TSO connected  
EAN Access point 123456789123456789  
EAN Delivery point 123456789123456789  
Single line diagram <...>

**Reason for rejection: The single line diagram is incomplete.**

Technology <...>  
CREG investment file number <...>  
Other DP's on the same geographical area <...>  
Technical dependencies with other DP's <...>  
DSO/CDS - CRM candidate Agreement <...>  
Expected nominal reference power <...>  
CO2 emission <...>  
CO2 emission attribution <...>

Prequalification

Auction Demo

Auction

Reports

My Account

Logout

## CMU Overview

CMU ID ▲	Status ▲	Preq. date ▲
ID1	Approved	
ID2	Submitted	
ID3	Rejected	
ID4	Approved	
ID5	Saved	
ID6	Approved	
ID7	Prequalified	dd/mm/yy
ID8	Approved	

## CMU information

CMU ID  
Status  
Creation date

ID8  
Approved  
dd/mm/yyyy

Conditional bank guarantee <...>  
Financial institution <...>  
SLA <...>  
Derating factor <...>  
Project ID <...>  
Project execution plan <...>  
Project start date - end date <...>  
ID of technical agreement <...>  
Opt-out notification <...>  
Declared day-ahead price <...>  
NEMO <...>

- + DP1
- + DP2
- + DP3

Submit opt-out AND/OR contestation

Edit Opt-out

Contest NRP

Contest NRP

Contest NRP



Prequalification

Auction Demo

Auction

Reports

My Account

Logout

## CMU Overview

CMU ID ▲	Status ▲
ID1	Approved
ID2	Submitted
ID3	Rejected
ID4	Approved
ID5	Saved
ID6	Approved
ID7	Prequalified
ID8	Approved

## Contestation of Nominal Reference Power

NRP target (MW)

Date of nominal reference power test

☐ DP2☐ DP3

opt-out AND/OR contestation

Edit Opt-out

Contest NRP

Contest NRP

Contest NRP

Prequalification

Auction Demo

Auction

Reports

My Account

Logout

## CMU Overview

CMU ID ▲	Status ▲
ID1	Approved
ID2	Submitted
ID3	Rejected
ID4	Approved
ID5	Saved
ID6	Approved
ID7	Prequalified
ID8	Approved

## CMU information

## Edit opt-out volume of CMU

Opt-out notification



DP1



DP2



DP3

t opt-out AND/OR contestation

Edit Opt-out

Contest NRP

Contest NRP

Contest NRP

Prequalification

Auction Demo

Auction

Reports

My Account

Logout

## CMU Overview

CMU ID ▲	Status ▲	Preq. date ▲
ID1	Approved	
ID2	Submitted	
ID3	Rejected	
ID4	Approved	
ID5	Saved	
ID6	Approved	
ID7	Prequalified	dd/mm/yy
ID8	Prequalified	dd/mm/yy

## CMU information

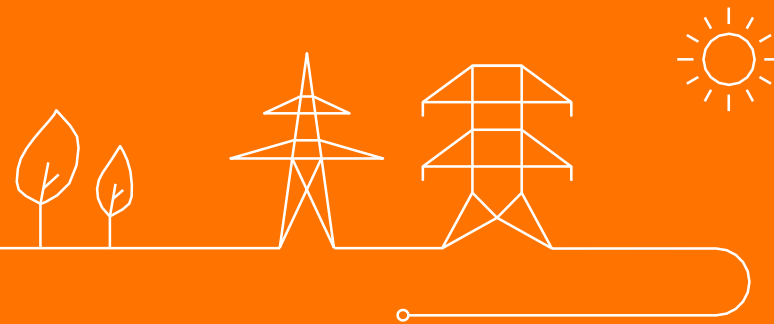
CMU ID	ID8
Status	Prequalified
Creation date	dd/mm/yyyy
Prequalification date	dd/mm/yyyy
Conditional bank guarantee	<...>
Financial institution	<...>
SLA	<...>
Derating factor	<...>
Project ID	<...>
Project execution plan	<...>
Project start date - end date	<...>
ID of technical agreement	<...>
Declared day-ahead price	<...>

+ DP1

+ DP2

+ DP3

# Creating and submitting a Virtual CMU



ENG

## Prequalification Platform

Add new CMU

Add new fast-track CMU

Prequalification

Auction Demo

Auction

Reports

My Account

Logout

### CMU Overview

### CMU information

CMU ID ▲	Status ▲	Preq. date ▲
ID1	Approved	
ID2	Submitted	
ID3	Rejected	
ID4	Approved	
ID5	Saved	
ID6	Approved	
ID7	Prequalified	dd/mm/yy

Prequalification

Auction Demo

Auction

Reports

My Account

Logout

## CMU Overview

## CMU information

CMU ID ▲	Status ▲
ID1	Approved
ID2	Submitted
ID3	Rejected
ID4	Approved
ID5	Saved
ID6	Approved
ID7	Prequalified

Which prequalification process do you want to start?

- ☒ Standard Prequalification Process (existing CMU or additional CMU)
- ☐ Specific Prequalification Process (Virtual CMU)

Confirm

Cancel

Prequalification

Auction Demo

Auction

Reports

My Account

Logout

## Add Virtual Capacity Market Unit

Declared Eligible Volume (MW)

Conditional bank guarantee




Financial institution of bank guarantee



Project execution plan

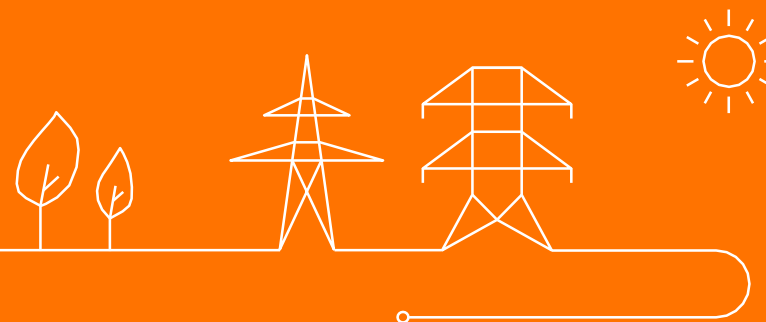


Expected start date of the project  

Save

Cancel

# Creating and submitting a fast track CMU





ENG

## Prequalification Platform

Add new CMU

Add new fast-track CMU

Prequalification

Auction Demo

Auction

Reports

My Account

Logout

### CMU Overview

### CMU information

CMU ID ▲	Status ▲	Preq. date ▲
ID1	Approved	
ID2	Submitted	
ID3	Rejected	
ID4	Approved	
ID5	Saved	
ID6	Approved	
ID7	Prequalified	dd/mm/yy

Prequalification

Auction Demo

Auction

Reports

My Account

Logout

## Prequalification Fast-track Submission

EAN Delivery point

EAN Access point

(if different from DP)

Grid Type connection

Distribution grid



Declared Nominal Reference power (MW)

Derating factor

Opt-out notification



Grid user declaration

Grid user declaration.pdf



Save

Cancel

Prequalification

Auction Demo

Auction

Reports

My Account

Logout

## CMU Overview

CMU ID ▲	Status ▲	Preq. date ▲
ID1	Approved	
ID2	Submitted	
ID3	Rejected	
ID4	Approved	
ID5	Saved	
ID6	Approved	
ID7	Prequalified	dd/mm/yy
ID8	Prequalified	dd/mm/yy
FT1	Saved	

## CMU information

CMU ID  
Status  
Creation date  
Submission date

FT1  
Saved  
dd/mm/yy  
dd/mm/yy

Grid type connection  
EAN DP  
EAN AP  
Declared nominal reference power  
Derating factor  
Opt-out notification  
Grid user declaration

DSO connected  
123456789123456789  
123456789123456789  
<...>  
<...>  
<...>  
<...>

Edit fast-track details

Submit fast-track

Prequalification

Auction Demo

Auction

Reports

My Account

Logout

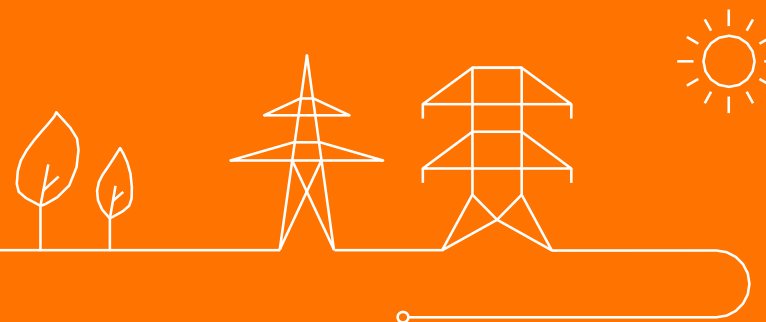
## CMU Overview

CMU ID ▲	Status ▲	Preq. date ▲
ID1	Approved	
ID2	Submitted	
ID3	Rejected	
ID4	Approved	
ID5	Saved	
ID6	Approved	
ID7	Prequalified	dd/mm/yy
ID8	Prequalified	dd/mm/yy
FT1	Accepted	dd/mm/yy

## CMU information

CMU ID	FT1
Status	Accepted
Creation date	dd/mm/yy
Prequalification date	dd/mm/yy
Grid type connection	DSO connected
EAN DP	123456789123456789
EAN AP	123456789123456789
Declared nominal reference power	<...>
Derating factor	<...>
Opt-out notification	<...>
Grid user declaration	<...>

# Change Account Details



ENG

Prequalification

Auction Demo

Auction

Reports

My Account

Logout

My Account

Company Information

Change Account Data

Cancel

Company name:

Address Head Office:

Telephone:

Fax:

Registration Number:

Date of Foundation:

Energy IDentification Code (EIC):

Company name and bank account details for payment and invoices

Company name:

Email address:

Bank name:

Street:

Postal code:

City:

Country:

IBAN:

SWIFT/BIC:

Currency for ordering & invoicing:

Contact details

Contact 1

Language:

Civil status:

First name:

Last name:

Function:

Telephone:

Mobile:

Email:

☒ Contractual relations

☐ The exploitation of the Connection (Connection contract)

☐ Emergency (24h/24h)

☐ Maintenance

☐ Planning

☐ Analysis of incidents

☐ in the framework of the rescue code and the restoration code for the Connection of Off-takes (outside working hours)

☐ in the framework of the rescue code and the restoration code for the Connection of Production Units (during working hours)

☐ Counting and metering

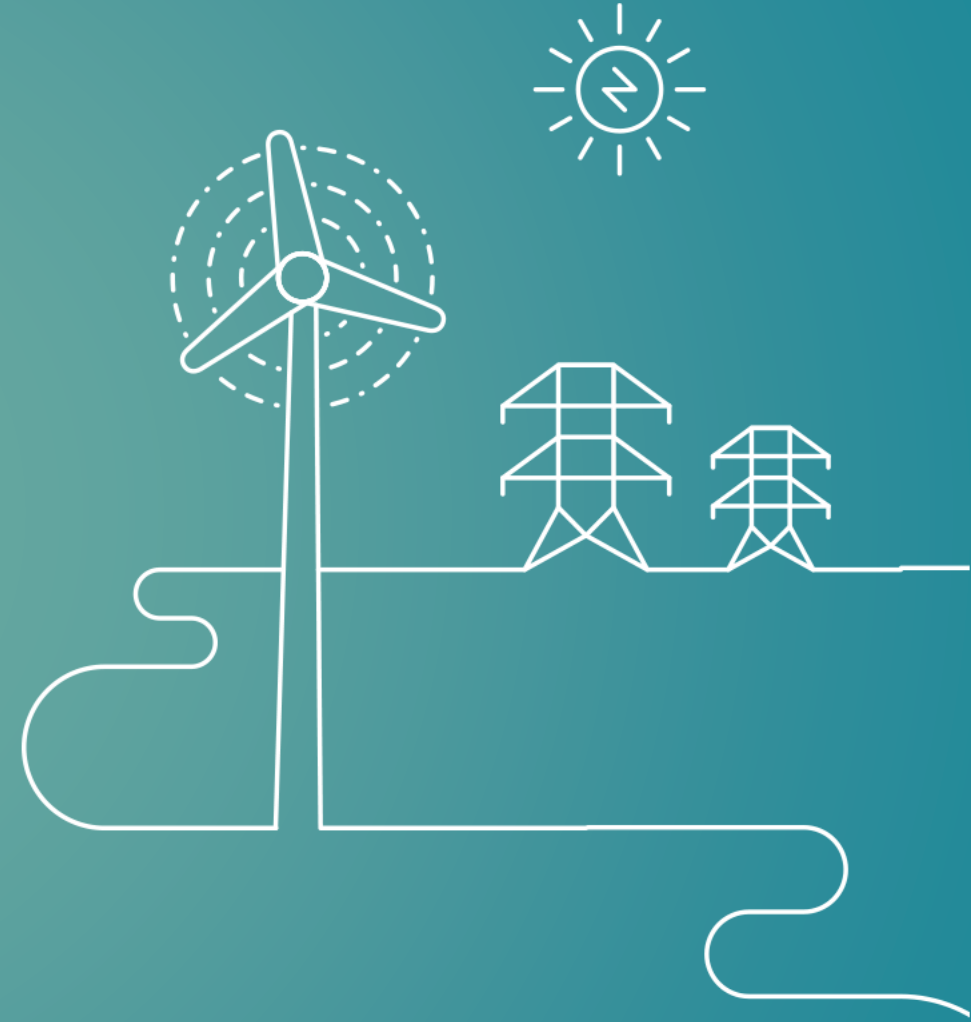
☐ Invoicing

+ Add contact

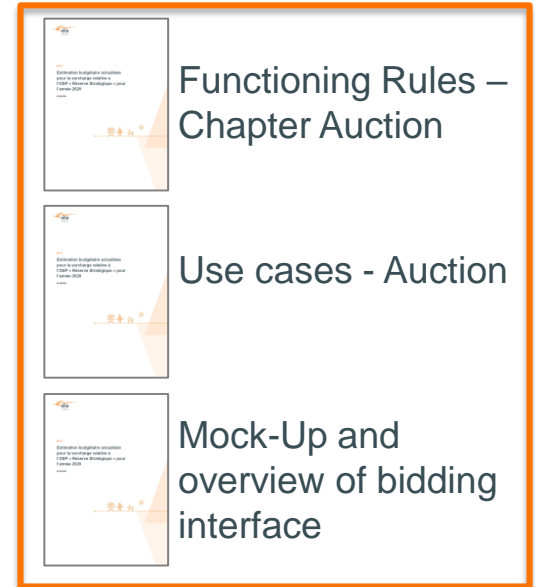
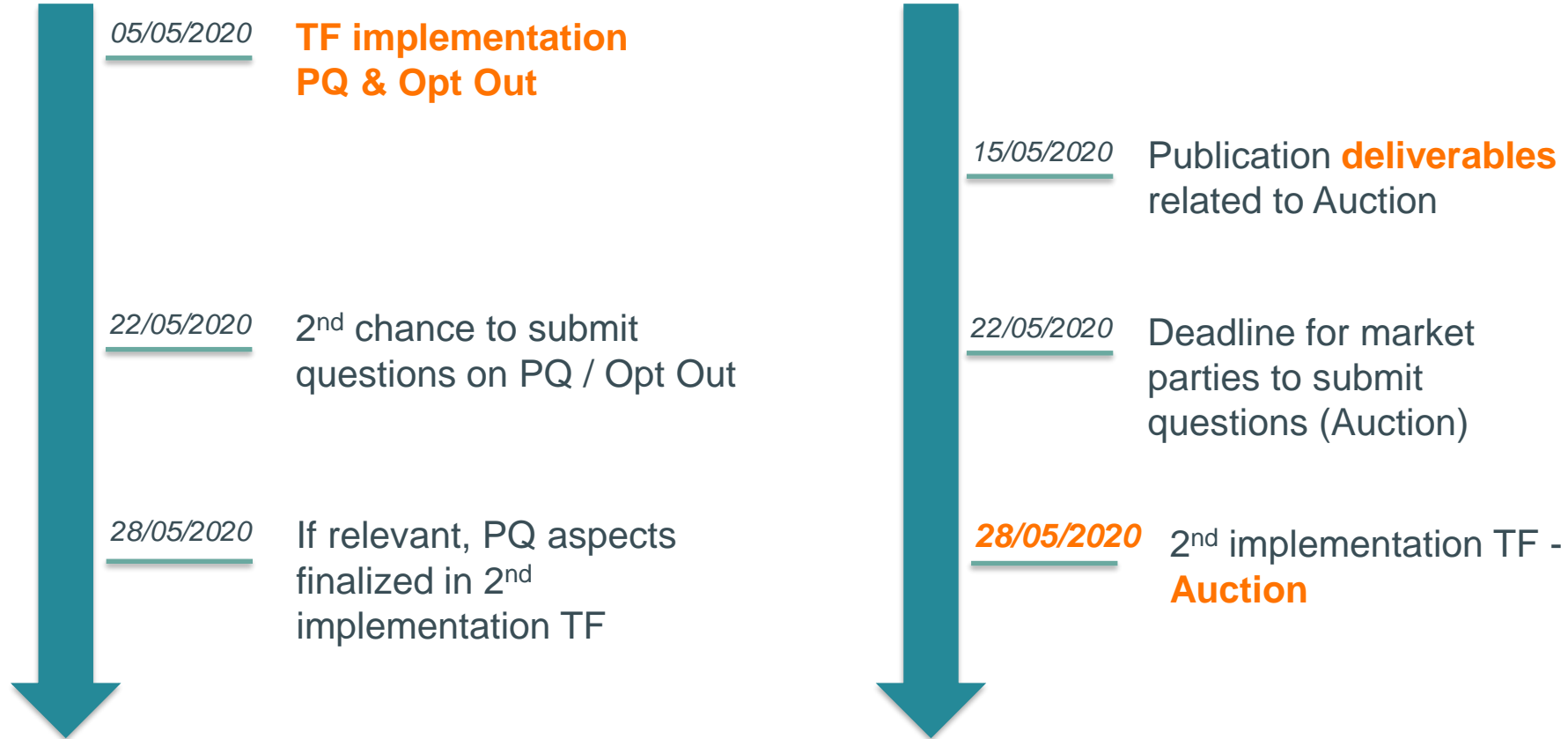
Delete contact

# Implementation Task Force CRM

Next steps



## Next steps



In parallel, bilateral discussions and clarification on questions not answered to in implementation TF





**Thank you.**

